



## FILLET LOUNGE | INDOOR - OUTDOOR

design Giacomo Moor

Chaise-longue suitable for indoor and outdoor use with tubular AISI 316 stainless steel frame Ø25 mm and shell with 5 mm thick aluminum sheet, fixed to the frame with screws. Finish of both components in epoxy polyester powder coating, available in Burnished color (for indoor use only), Scratch-resistant painting col. Matt Black, or Scratch-resistant Matt RAL 9001 White Cream Painting (for indoor and outdoor use). For indoor use only, a 100% virgin wool felt mat is available, featuring a non-slip fabric backing and a headrest bolster in prewashed and sterilized goose down, stitched into separate compartments with polyurethane foam insert; attachment to the felt cover secured by a magnetic system using integrated galvanized steel inserts.

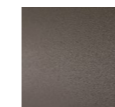
Headrest cushion in fabric or leather, fully removable using zippers and Velcro fastenings. For outdoor use, seat cushion in open cell polyurethane foam with a draining fabric cover, and upholstery in outdoor fabric only with a non-slip fabric backing, fully removable with zippers. Floor support provided by interchangeable black plastic tips. Seat depth: 96 cm.

### Mat



Felt  
(Indoor)

### Structure



Burnished  
Painting  
(Indoor)

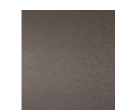


Scratch-resistant  
Painting col.  
Matt Black  
(In-Outdoor)



Scratch-resistant  
Painting Matt  
RAL 9001  
White Cream  
(In-Outdoor)

### Shell



Burnished  
Painting  
(Indoor)



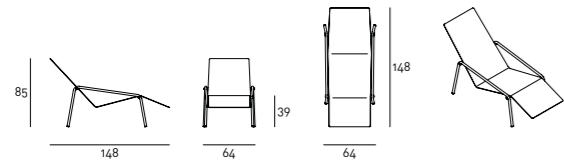
Scratch-resistant  
Painting col.  
Matt Black  
(In-Outdoor)



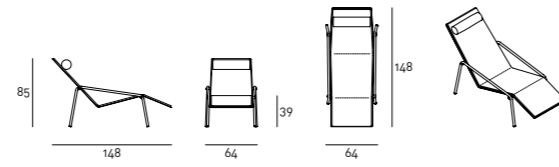
Scratch-resistant  
Painting Matt  
RAL 9001  
White Cream  
(In-Outdoor)

## Technical Drawings

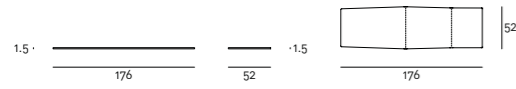
### Chaise longue without seat mat



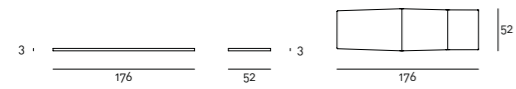
### Chaise longue with seat mat



### Seat mat



### Seat cushion



### Headrest bolster



## Notes

#### Notes on magnetic accessories:

- Do not place magnets near heat sources, as this could permanently damage their magnetic properties (maximum recommended temperature: 80°C).
- The use of magnets is contraindicated for individuals with pacemakers, or any other implanted electronic medical devices.
- Keep magnets away from electric/electronic clocks and magnetic cards, as this could damage or alter their magnetic data.
- Keep magnets away from individuals with implanted electronic medical devices (e.g. Pacemaker).
- Do not place hands between two magnets or two magnetized products.
- Keep the product in a dry place, free from corrosive atmospheres.
- Keep away from ferromagnetic materials (e.g. iron, cobalt, nickel) and other magnets or magnetized devices.

For the OUTDOOR version, we recommend placing the product on terraces or verandas to guarantee its durability over the years. It is recommended to use a "Protective Cover" to improve the longevity of the product. For further information about the dedicated maintenance, please refer to the technical sheet available in the "Materials" section on our website.

The scratch-resistant coating increases scratch resistance compared to standard coatings, but doesn't completely eliminate the possibility of scratches on the surface.

For information on the compatibility of the collection's coverings with each product, please refer to the [compliance sheet](#) provided in the "Materials" section of the website.

For leather coverings the "Leather A" or "Leather B" Maintenance Kit is included with the product.



