

# Audo



*Textile*

The Audo Upholstery Program is an overview of the textile and leathers available for Audo upholstered furniture. All textile and leather options are available in all colors. You'll find over 100 fabric and leather options, with the most popular configurations available with expedited delivery in our Quick Ship program. Custom upholstery orders from our Audo Upholstery Program (SPEC) are ready to ship with standard delivery lead times. Our Fixed Combinations listed in this Brand Book are suggested upholsteries selected by our design team, and deliver with standard lead times.

We are happy to upholster furniture using customer's own materials (COM) with extended delivery lead times, upon fabric approval. COM products are to be calculated by PC1T if in textile and PC1L if in leather, excluding the price of the fabric.

Please note that the color references in this upholstery programme are only intended as a guide. For further information please see manufacturer websites, or contact your local Audo Sales Representative for samples or further information.

KVADRAT.DK  
SAHCO.COM  
NEVOTEX.COM  
JAB.DE  
DANISHARTWEAVING.COM  
DESIGNERSGUILD.COM  
DEDAR.COM



- TESTED AND APPROVED.
- NOT TESTED YET, BUT POSSIBLE TO TEST

Use table to determine the upholstery options available for fabric-covered items.

|                                  | AFTERROOM | BRASILIA | CAIRN | CO CHAIR | CONSTANCE CHAIR | CONSTANCE SOFA | EAVE COLLECTION | HARBOUR CHAIR | HARBOUR LOUNGE CHAIR | INGEBORG | KNITTING CHAIR | MERKUR | MINGLE | MY OWN CHAIR | OFFSET | READY | TEAROOM CLUB, SIDE & LOUNGE CHAIR W/SWIVEL | TEAROOM LOUNGE CHAIR | TEAROOM SOFA | THE TIRED MAN | VILHELM | THE PENGUIN | ELIZABETH | ODA | PAGODE | RADIOHUS | THE SEAL |   |
|----------------------------------|-----------|----------|-------|----------|-----------------|----------------|-----------------|---------------|----------------------|----------|----------------|--------|--------|--------------|--------|-------|--|----------------------|--------------|---------------|---------|-------------|-----------|-----|--------|----------|----------|---|
| <b>PRICE CATEGORY 0</b>          |           |          |       |          |                 |                |                 |               |                      |          |                |        |        |              |        |       |  |                      |              |               |         |             |           |     |        |          |          |   |
| AUDO BOUCLÉ, AUDO                | ●         | ●        | ●     | ●        | ●               | ○              | ●               | ●             | ●                    | ●        | ●              | ●      | ○      | ○            | ●      | ●     | ●  | ●                    | ●            | ●             | ○       | ○           | ○         |     | ○      | ○        | ○        |   |
| <b>PRICE CATEGORY 1</b>          |           |          |       |          |                 |                |                 |               |                      |          |                |        |        |              |        |       |  |                      |              |               |         |             |           |     |        |          |          |   |
| BARNUM BOUCLÉ, AUDO              | ●         | ●        | ●     | ●        | ○               | ○              | ●               | ●             | ○                    | ○        | ○              | ●      | ○      | ○            | ●      | ●     | ●  | ●                    | ●            | ●             | ○       | ○           | ○         |     | ○      | ○        | ○        |   |
| CHAMPION, JAB                    | ●         | ●        | ●     | ●        | ○               | ○              | ●               | ●             |                      | ○        | ●              | ○      | ○      | ○            | ●      | ○     | ●  | ●                    | ●            | ○             | ○       | ○           | ○         |     | ○      | ○        | ○        |   |
| ILLUSION, NEVOTEX                | ●         | ○        | ●     | ●        | ○               | ○              | ●               | ●             |                      | ○        | ●              | ○      | ○      | ○            | ●      | ○     | ○  | ○                    | ○            | ○             | ○       | ○           | ○         |     |        | ○        | ○        |   |
| HOT MADISON, JAB                 | ●         | ●        | ●     | ●        | ●               | ○              | ●               | ●             | ●                    | ●        |                | ○      | ○      | ○            | ●      | ○     | ●  | ●                    | ●            | ○             | ○       | ○           | ○         |     |        | ○        | ○        |   |
| MAPLE, KVADRAT                   | ●         | ●        | ●     | ●        | ○               | ○              | ●               | ●             |                      | ○        | ●              | ○      | ○      | ○            | ●      | ○     | ●  | ●                    | ●            | ○             | ○       |             |           |     |        |          |          |   |
| REMIX, KVADRAT                   | ●         | ●        | ●     | ●        | ○               | ○              | ●               | ●             | ●                    | ○        | ●              | ○      | ○      | ●            | ●      | ●     | ●  | ●                    | ●            | ○             | ○       | ●           | ●         |     | ●      | ●        | ●        |   |
| RE-WOOL, KVADRAT                 | ●         | ○        | ●     | ●        | ○               | ○              | ●               | ●             | ●                    | ○        | ○              | ○      | ○      | ○            | ●      | ●     | ●  | ●                    | ●            | ○             | ○       | ●           | ●         |     | ●      | ●        | ●        |   |
| <b>PRICE CATEGORY 2</b>          |           |          |       |          |                 |                |                 |               |                      |          |                |        |        |              |        |       |  |                      |              |               |         |             |           |     |        |          |          |   |
| CANVAS 2, KVADRAT                | ●         | ●        | ●     | ●        | ○               | ○              | ●               | ●             | ●                    | ○        | ●              | ○      | ○      | ○            | ●      | ●     | ●  | ●                    | ●            | ○             | ○       | ○           | ○         |     | ○      | ○        | ○        |   |
| CLAY, SAHCO, KVADRAT             | ●         | ●        | ○     | ●        | ○               | ○              | ●               | ●             | ○                    | ○        | ○              | ○      | ○      | ○            | ●      | ○     | ●  | ●                    | ●            | ○             | ○       | ○           | ○         |     | ○      | ○        | ○        |   |
| COLLINE, KVADRAT                 | ●         | ●        | ○     | ●        | ○               | ○              | ●               | ●             | ●                    | ●        | ●              | ○      | ●      | ●            | ●      | ●     | ●  | ●                    | ●            | ○             | ●       | ○           | ○         |     | ○      | ○        | ○        |   |
| FIORD, KVADRAT                   | ●         | ●        | ●     | ●        | ○               | ○              | ●               | ●             | ●                    | ●        | ●              | ○      | ○      | ●            | ●      | ●     | ●  | ●                    | ●            | ○             | ●       | ●           | ●         | ●   | ●      | ●        | ●        |   |
| HALLINGDAL 65, KVADRAT           | ●         | ●        | ●     | ●        | ●               | ●              | ●               | ●             | ●                    | ●        | ●              | ●      | ●      | ●            | ●      | ●     | ●  | ●                    | ●            | ●             | ●       | ●           | ●         | ●   | ●      | ●        | ●        |   |
| MOSS, SAHCO, KVADRAT             | ●         | ●        | ●     | ●        | ○               | ○              | ●               | ●             | ●                    | ○        | ●              | ○      | ○      | ○            | ●      | ●     | ●  | ●                    | ●            | ●             | ●       | ●           | ●         | ○   | ○      | ○        | ○        |   |
| REFLECT, KVADRAT                 | ●         | ○        | ○     | ●        | ○               | ○              | ●               | ●             |                      | ○        | ○              | ○      | ○      | ○            | ○      | ○     | ○  | ○                    | ○            | ○             | ○       | ○           | ○         |     | ○      | ○        | ○        |   |
| SAVANNA, KVADRAT                 | ●         | ●        | ●     | ●        | ○               | ○              | ●               | ●             | ●                    | ○        | ●              | ○      | ○      | ○            | ●      | ●     | ●  | ●                    | ●            | ○             | ○       | ○           | ○         | ○   | ○      | ○        | ○        |   |
| STEELCUT, KVADRAT                | ●         | ○        | ●     | ●        | ○               | ○              | ●               | ●             | ●                    | ○        | ○              | ○      | ○      | ○            | ●      | ○     | ●  | ●                    | ○            | ○             | ○       | ○           | ●         | ●   |        | ○        | ○        | ● |
| STEELCUT TRIO 3, KVADRAT         | ●         | ○        | ●     | ●        | ○               | ○              | ●               | ●             | ●                    | ○        | ●              | ○      | ○      | ○            | ●      | ○     | ●  | ●                    | ●            | ○             | ○       | ●           | ●         |     | ○      | ○        | ●        |   |
| <b>PRICE CATEGORY 3</b>          |           |          |       |          |                 |                |                 |               |                      |          |                |        |        |              |        |       |  |                      |              |               |         |             |           |     |        |          |          |   |
| ARCTIC, JAB                      | ○         | ●        | ○     | ○        | ○               | ○              | ●               | ●             | ○                    | ○        | ○              | ○      | ○      | ○            | ○      | ○     | ●  | ●                    | ○            | ○             | ○       | ○           | ○         | ○   | ○      | ○        | ○        |   |
| SAFIRE, SAHCO, KVADRAT           | ●         | ●        | ●     | ●        | ○               | ○              | ●               | ●             | ●                    | ○        | ●              | ○      | ○      | ●            | ●      | ○     | ●  | ●                    | ●            | ○             | ○       | ○           | ●         | ○   | ○      | ●        | ●        | ○ |
| VIDAR 4, KVADRAT                 | ●         | ●        | ●     | ●        | ○               | ○              | ●               | ●             | ●                    | ○        | ○              | ○      | ○      | ●            | ●      | ○     | ●  | ●                    | ●            | ○             | ○       | ○           | ●         | ○   | ○      | ○        | ○        |   |
| ZERO, SAHCO, KVADRAT             | ○         | ●        | ●     | ●        | ●               | ●              | ●               | ●             | ○                    | ●        | ○              | ○      | ●      | ●            | ●      | ●     | ○  | ○                    | ●            | ●             | ●       | ○           | ○         | ○   | ○      | ○        | ○        |   |
| <b>PRICE CATEGORY 4</b>          |           |          |       |          |                 |                |                 |               |                      |          |                |        |        |              |        |       |  |                      |              |               |         |             |           |     |        |          |          |   |
| CABANON SOFT, DESIGNERS GUILD    | ○         | ○        |       | ○        |                 |                |                 |               |                      |          | ○              | ○      |        |              |        |       | ●  |                      |              |               |         |             |           |     |        |          |          |   |
| DOPPIOPANAMA, DEDAR              | ●         | ○        | ○     | ●        | ○               | ○              | ●               | ●             | ○                    | ○        | ○              | ○      | ○      | ○            | ○      | ○     | ●  | ●                    | ○            | ○             | ○       | ○           | ○         |     | ○      | ○        | ○        |   |
| GRAND MOHAIR, DANISH ART WEAVING | ○         | ○        | ●     | ●        | ●               | ●              |                 | ○             | ●                    | ●        | ○              | ○      | ●      | ○            |        | ○     | ○  | ○                    | ●            | ○             | ●       | ○           | ○         |     | ○      | ○        | ○        |   |
| LUPO, DEDAR                      | ●         | ○        | ○     | ●        | ○               | ○              | ●               | ●             | ○                    | ○        | ○              | ○      | ○      | ○            | ●      | ○     | ●  | ●                    | ○            | ○             | ○       | ○           | ○         | ○   | ○      | ○        | ○        |   |

*Textile Category 0*

AUDO BOUCLÉ  
*by Audo*



---

PRICE CATEGORY  
0

---

MATERIALS  
78% Acrylic,  
20% Polyester  
2% Viscose

---

MARTINDALE  
60.000

---

LIGHTFASTNESS  
5-7

---

PILLING  
4



02



06



08



07



15



16



20

*Textile Category 1*

BARNUM BOUCLE  
*by Audo*



---

PRICE CATEGORY  
1

---

MANUFACTURER  
Audo

---

MATERIALS  
45% Cotton  
19% Viscose  
15% Wool  
13% PC  
8% Polyester

---

MARTINDALE  
60,000

---

LIGHTFASTNESS  
5

---

PILLING  
4



04



05



10



11



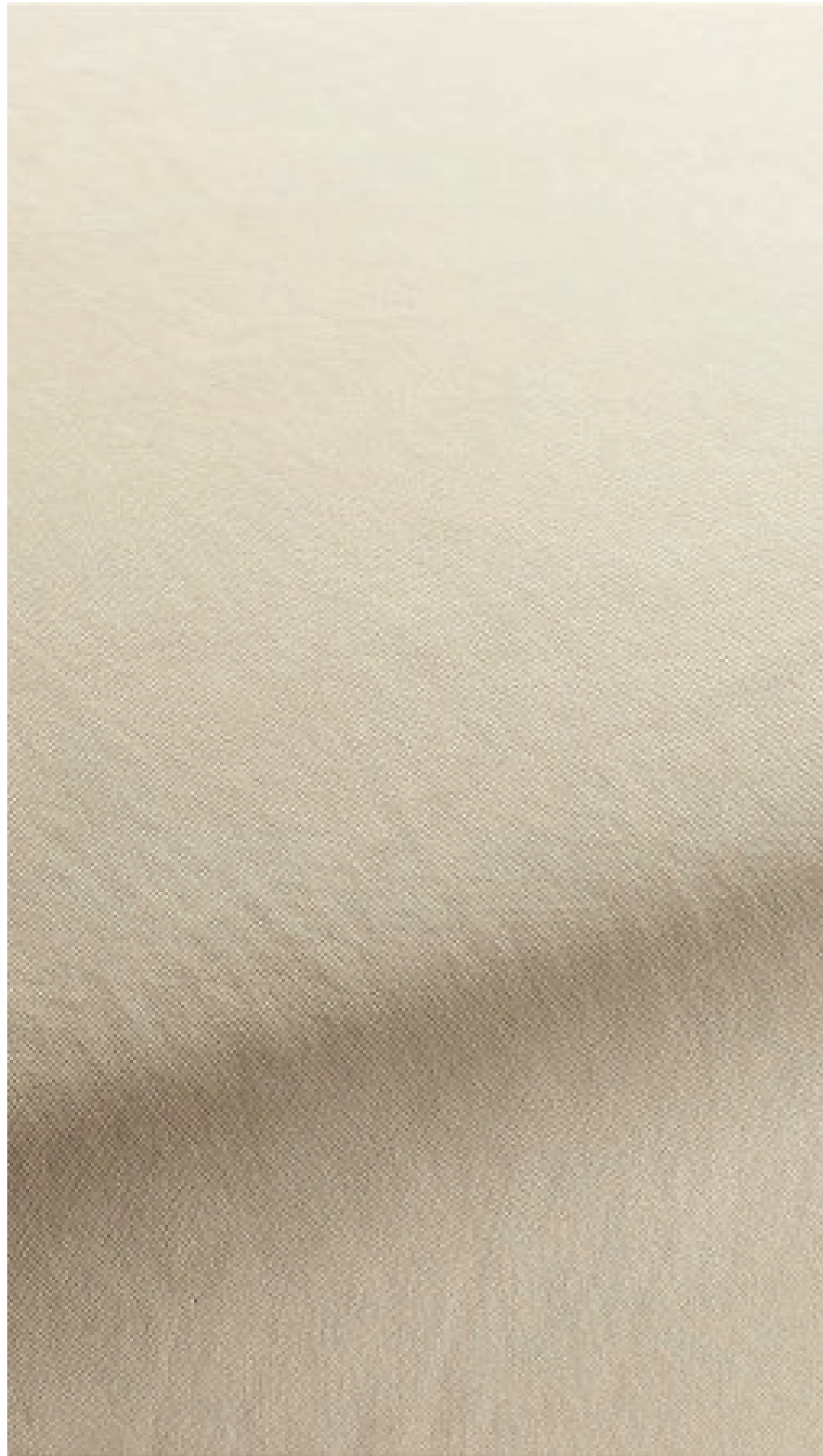
19



21



24



PRICE CATEGORY  
1

MANUFACTURER  
JAB

MATERIALS  
100% Polyester

MARTINDALE  
70.000

LIGHTFASTNESS  
5



1-3114-010



1-3114-011



1-3114-012



1-3114-020



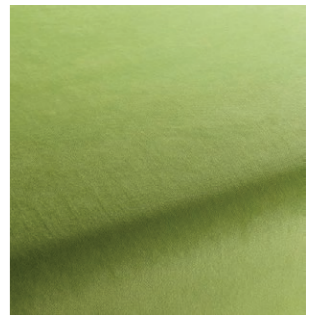
1-3114-021



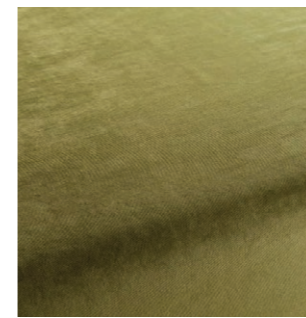
1-3114-022



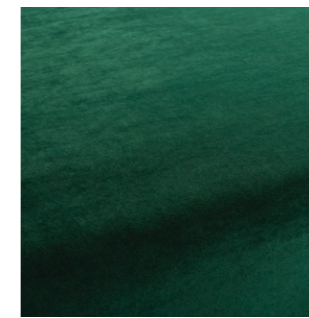
1-3114-030



1-3114-031



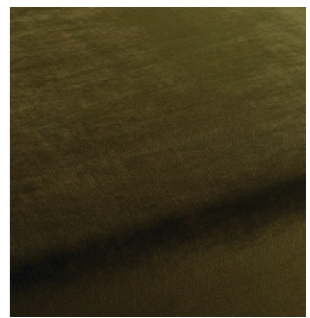
1-3114-032



1-3114-033



1-3114-034



1-3114-035



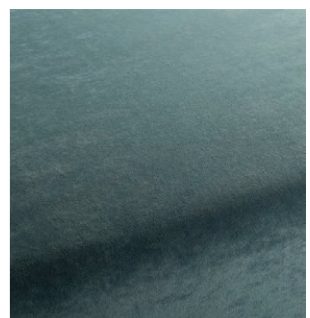
1-3114-040



1-3114-041



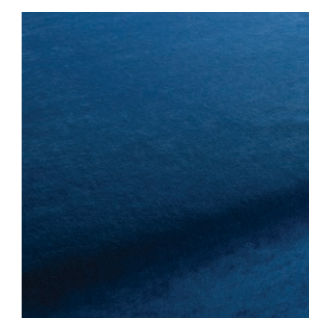
1-3114-050



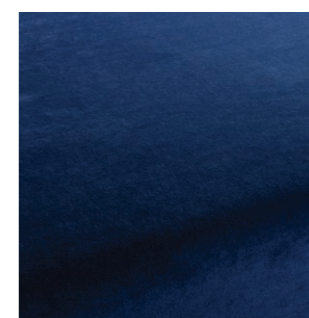
1-3114-051



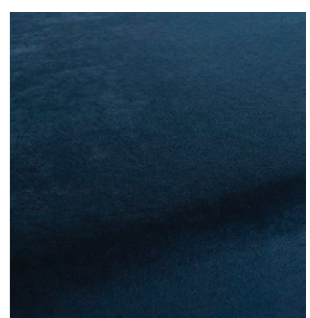
1-3114-052



1-3114-053



1-3114-054

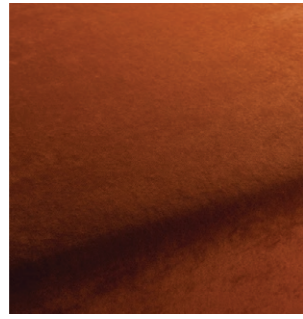


1-3114-055





1-3114-060



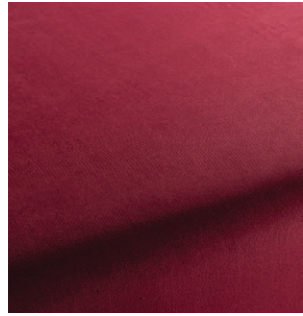
1-3114-061



1-3114-062



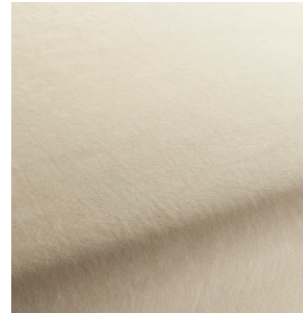
1-3114-063



1-3114-064



1-3114-070



1-3114-071



1-3114-072



1-3114-073



1-3114-074



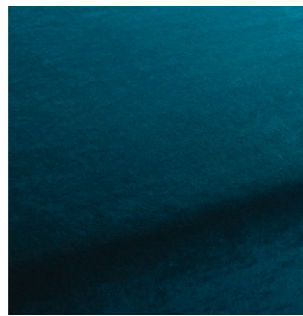
1-3114-075



1-3114-080



1-3114-081



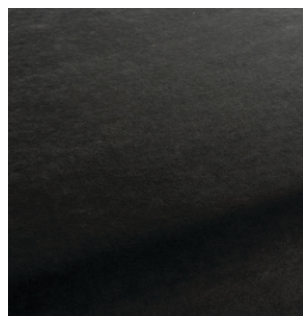
1-3114-082



1-3114-091



1-3114-092





PRICE CATEGORY  
1

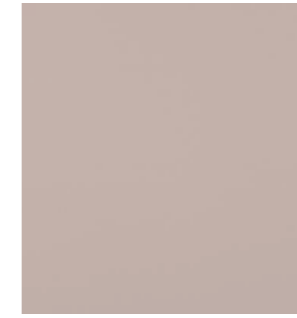
MANUFACTURER  
Nevotex

MATERIALS  
Artificial leather

THICKNESS  
1 mm



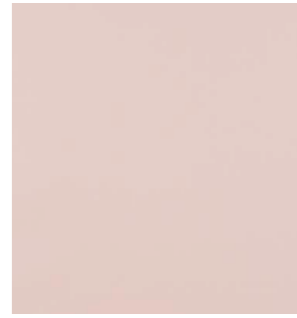
82417



93086



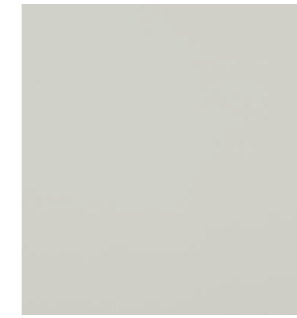
53593



22427



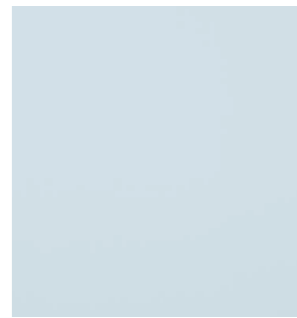
65072



72133



63174



61602



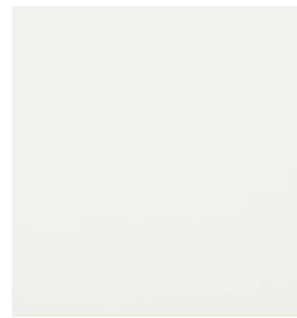
65307



74007



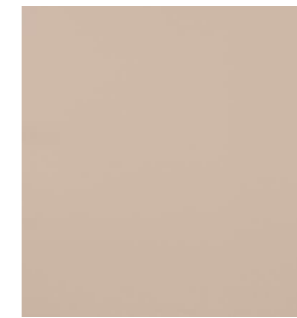
76236



00800



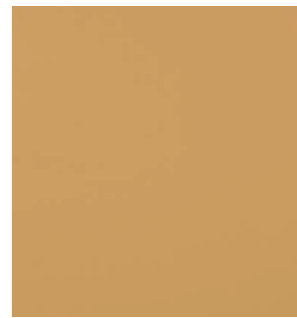
84176



85352



87241



36519



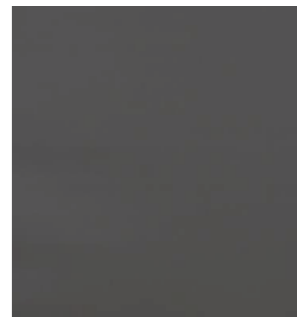
44184



24784



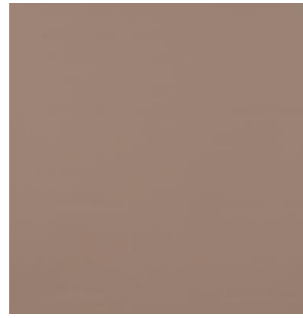
45633



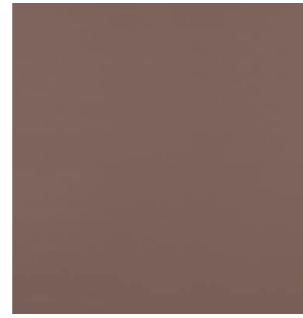
57841



48013



46508



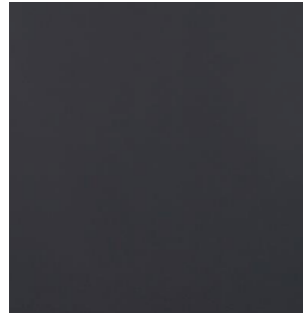
47124



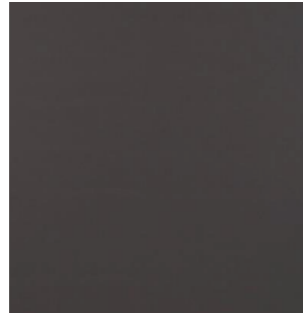
67403



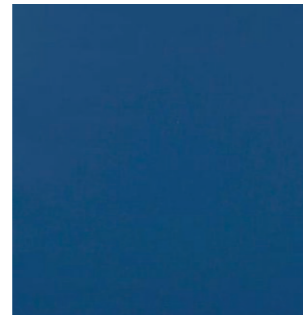
47069



68523



58290



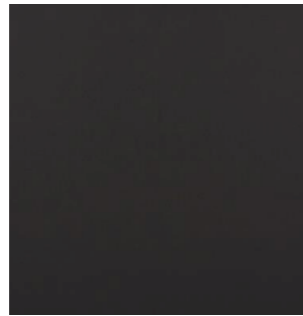
68746



65066



67382



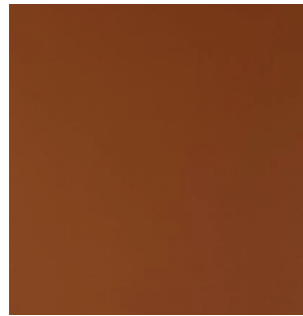
00110



83430



85020



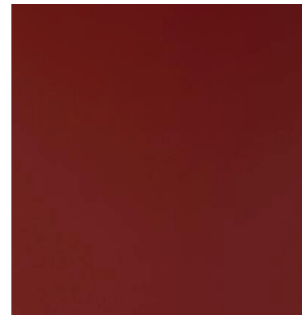
44388



36850



23660



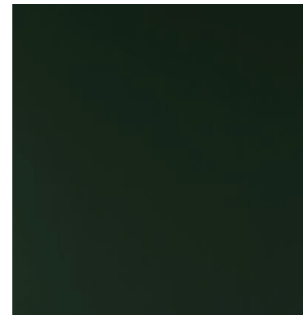
28040



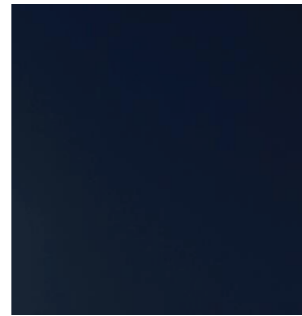
75566



76725

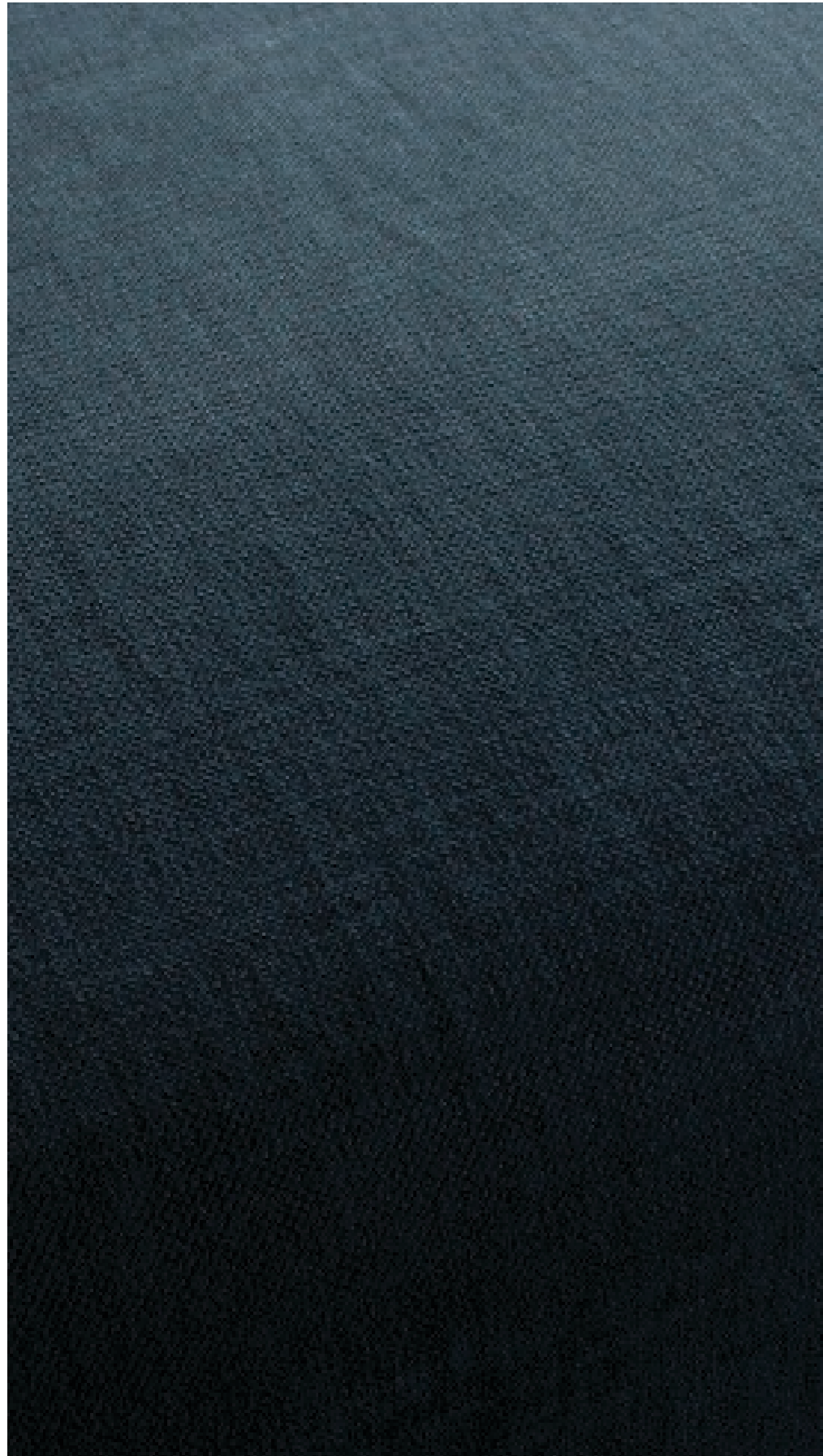


77773



66745

HOT MADISON REBOOT  
by JAB



PRICE CATEGORY  
1

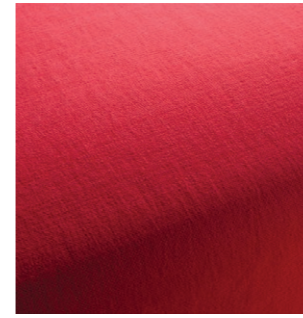
MANUFACTURER  
JAB

MATERIALS  
63% Cotton  
37% Linen

MARTINDALE  
55.000

LIGHTFASTNESS  
4-5

PILLING  
4-5



CH1249-011



CH1249-012



CH1249-013



CH1249-020



CH1249-021



CH1249-022



CH1249-023



CH1249-037



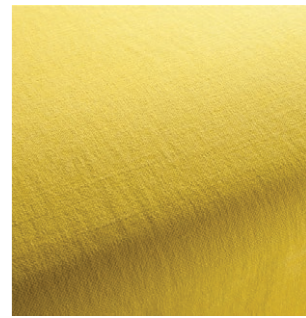
CH1249-038



CH1249-039



CH1249-043



CH1249-045



CH1249-046



CH1249-046



CH1249-050



CH1249-052



CH1249-053



CH1249-055



CH1249-056



CH1249-059



CH1249-062



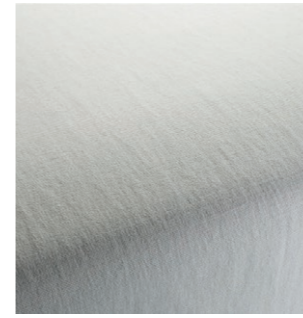
CH1249-063



CH1249-064



CH1249-070



CH1249-087



CH1249-088



CH1249-089



CH1249-091



CH1249-071



CH1249-072



CH1249-073



CH1249-074



CH1249-092



CH1249-093



CH1249-094



CH1249-095



CH1249-075



CH1249-076



CH1249-077



CH1249-078



CH1249-096



CH1249-097



CH1249-098



CH1249-099



CH1249-079



CH1249-080



CH1249-081



CH1249-082



CH1249-126



CH1249-127



CH1249-130



CH1249-131



CH1249-083



CH1249-084



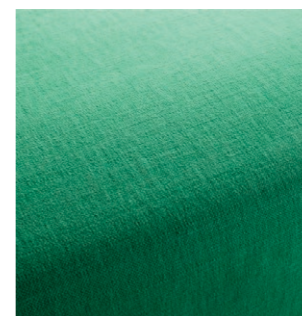
CH1249-085



CH1249-086



CH1249-133



CH1249-134



CH1249-135



CH1249-139



CH1249-155



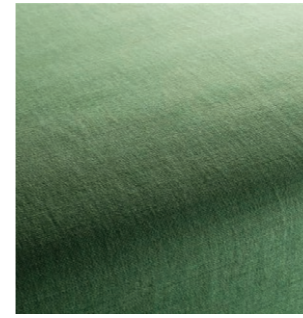
CH1249-170



CH1249-171



CH1249-172



CH1249-232



CH1249-233



CH1249-234



CH1249-245



CH1249-180



CH1249-181



CH1249-182



CH1249-183



CH1249-248



CH1249-404



CH1249-410



CH1249-419



CH1249-184



CH1249-185



CH1249-186



CH1249-191



CH1249-420



CH1249-424



CH1249-459



CH1249-469



CH1249-192



CH1249-193



CH1249-194



CH1249-195



CH1249-471



CH1249-476



CH1249-490



CH1249-495



CH1249-196



CH1249-197



CH1249-230



CH1249-231



CH1249-497



CH1249-499



CH1249-509



CH1249-517



CH1249-521



CH1249-524



CH1249-525



CH1249-528



CH1249-710



CH1249-711



CH1249-712



CH1249-713



CH1249-694-



CH1249-695



CH1249-696



CH1249-697



CH1249-714



CH1249-715



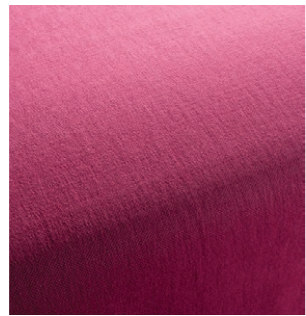
CH1249-716



CH1249-717



CH1249-698



CH1249-699



CH1249-700



CH1249-701



CH1249-718



CH1249-719



CH1249-720



CH1249-721



CH1249-702



CH1249-703



CH1249-704



CH1249-705



CH1249-722



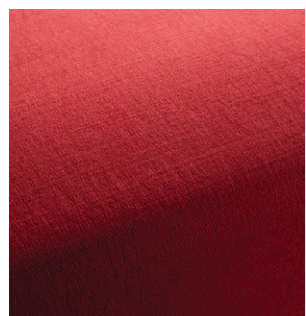
CH1249-723



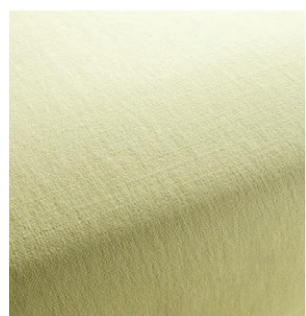
CH1249-724



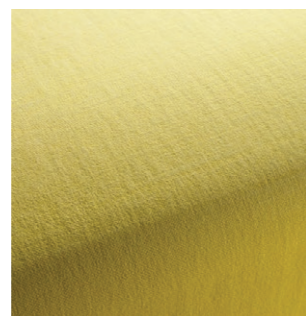
CH1249-725



CH1249-706



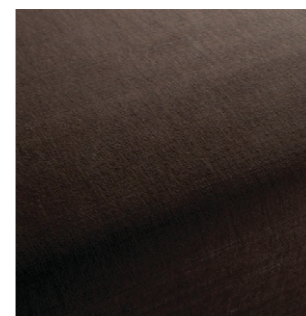
CH1249-707



CH1249-708



CH1249-709



CH1249-884



CH1249-893



CH1249-894



CH1249-896



CH1249-897



CH1249-898



CH1249-934



CH1249-987



CH1249-988



CH1249-989



CH1249-990



CH1249-991



CH1249-992



CH1249-993



CH1249-994





PRICE CATEGORY  
1

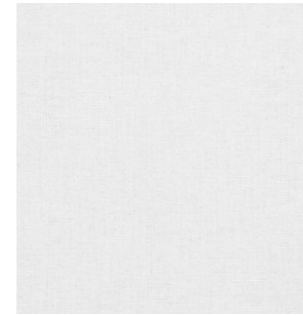
MANUFACTURER  
Kvadrat

MATERIALS  
81% Viscose  
15% Linen  
4% Non-woven Polyester  
backing

MARTINDALE  
30.000

LIGHTFASTNESS  
5-7

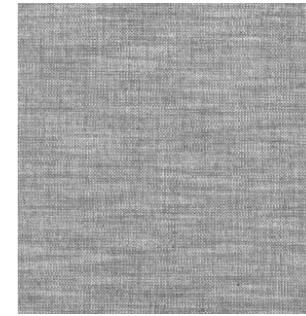
PILLING  
5



0102



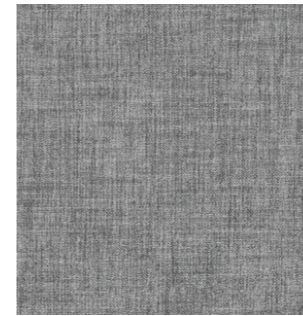
0112



0132



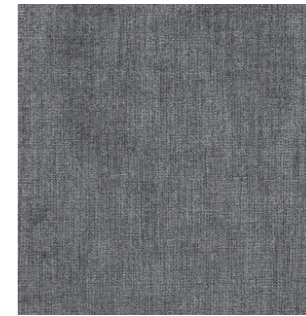
0142



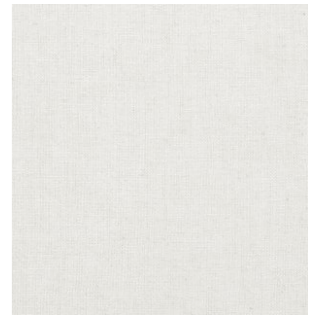
0162



0172



0192



0202



0212



0222



0232



0332



0342



0352



0362



0392



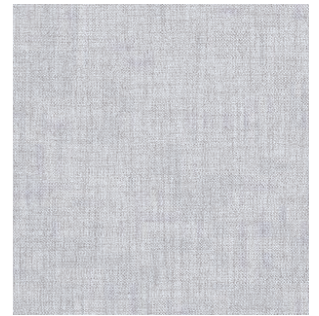
0542



0562



0662



0722



0732



0742



0762



0792



0832



0862



PRICE CATEGORY  
1

MANUFACTURER  
Kvadrat

MATERIALS  
90% New wool  
10% Nylon

MARTINDALE  
100.000

LIGHTFASTNESS  
5-7

PILLING  
4



0113



0123



0126



0133



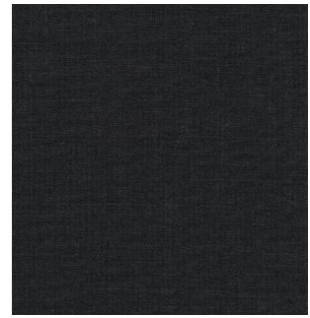
0136



0143



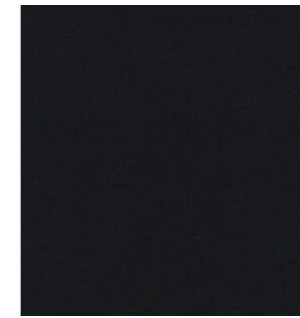
0152



0173



0183



0196



0223



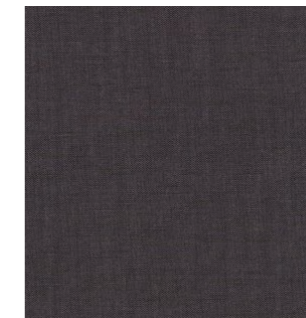
0233



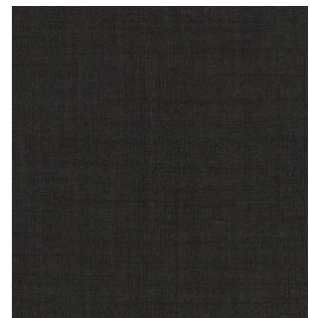
0242



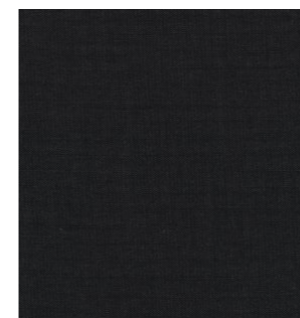
0252



276



0266



0276



0296



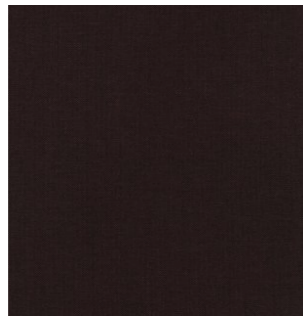
0326



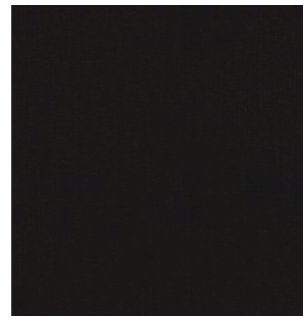
0346



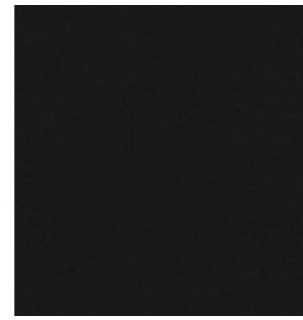
0356



0362



0373



0383



0672



0682



0686



0692



0406



0412



0422



0433



0716



0722



0733



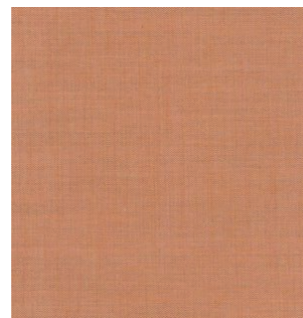
0743



0443



0452



0516



0536



0753



0762



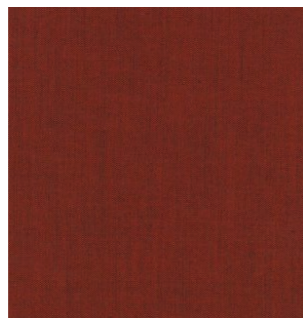
0773



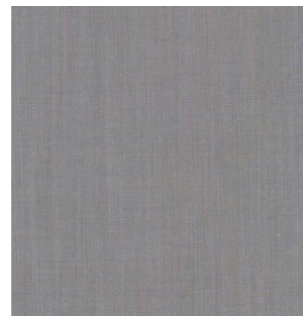
0783



0543



0566



0606



0612



0796



0816



0823



0836



0632



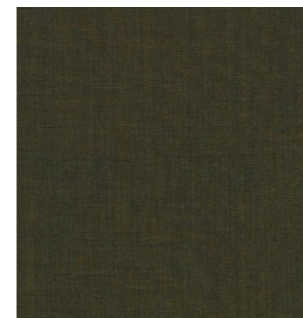
0643



0653



0662



0842



0852



0866



0873



0906



0912



0923



0933



0942



0954



0962



0973



0982



0996



PRICE CATEGORY  
1

MANUFACTURER  
Kvadrat

MATERIALS  
45% new wool worsted  
45% recycled wool  
10% nylon

MARTINDALE  
100.000

LIGHTFASTNESS  
5-7 (ISO 1-8)

PILLING  
4 (ISO 1-5)



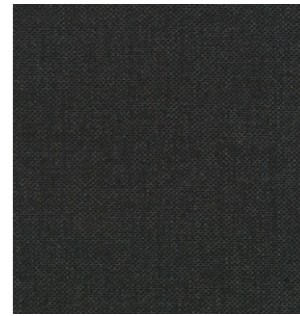
0108



0128



0158



0198



0218



0358



0378



0408



0448



0458



0558



0568



0628



0648



0658



0718



0758



0768



0828



0858



0868

## *Textile Category 2*





PRICE CATEGORY  
2

MANUFACTURER  
Kvadrat

MATERIALS  
90% New wool  
10% Nylon

MARTINDALE  
100.000

LIGHTFASTNESS  
5-7

PILLING  
4-5



114



124



134



154



174



216



224



244



254



264



356



364



374



414



424



446



454



546



556



566



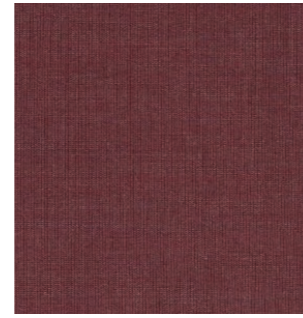
576



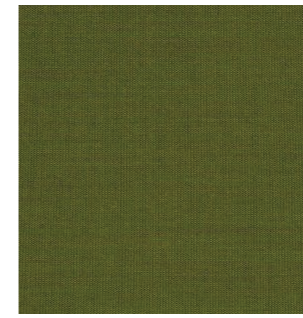
614



644



654



954



964



974



984



666



674



684



694



996



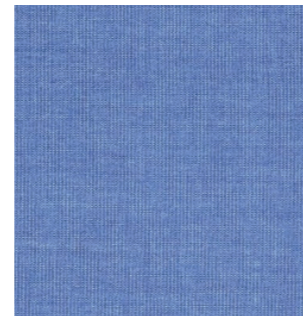
716



726



734



746



764



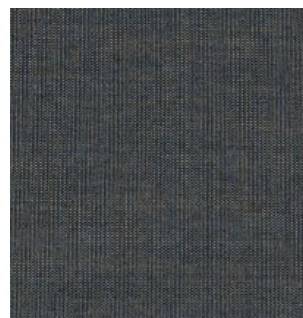
786



794



836



854



926



936



946



PRICE CATEGORY  
2

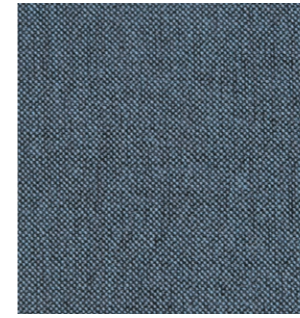
MANUFACTURER  
Sahco

MATERIALS  
76% Linen  
21% Cotton  
3% Polyester

MARTINDALE  
45.000

LIGHTFASTNESS  
4-6

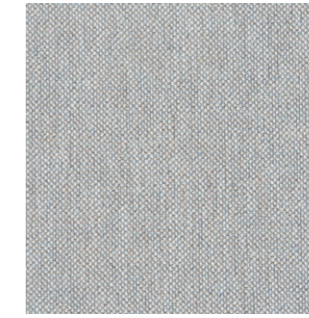
PILLING  
4



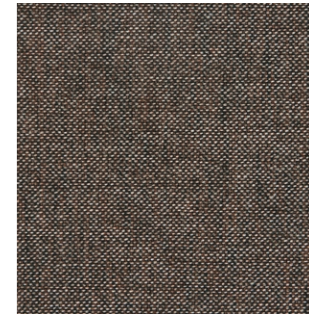
0001



0002



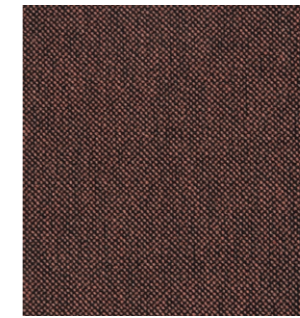
0003



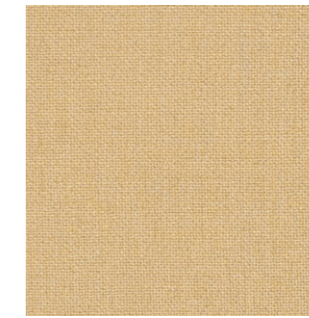
0004



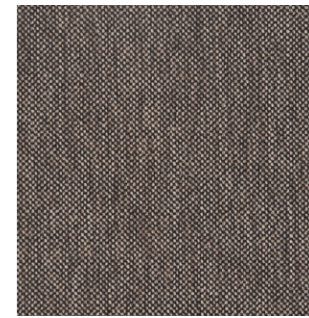
0005



0006



0007



0008



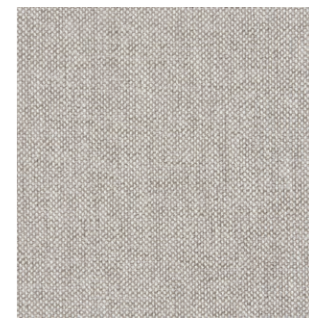
0009



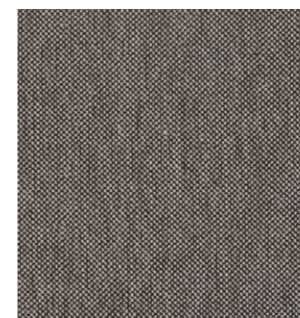
0010



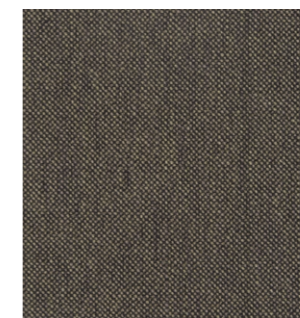
0011



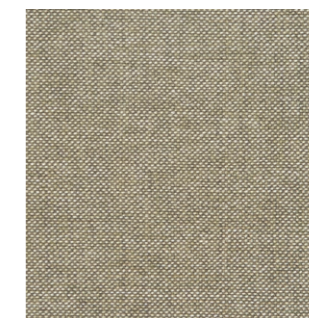
0012



0013



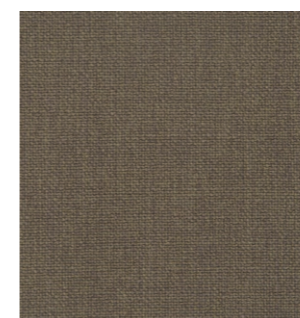
0014



0015



0016



0017



PRICE CATEGORY  
2

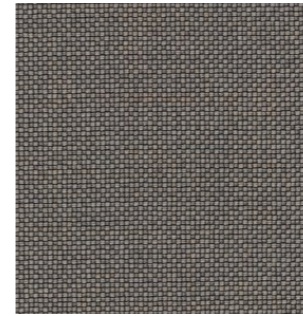
MANUFACTURER  
Kvadrat

MATERIALS  
75% Wool  
17% Acrylic  
8% Nylon

MARTINDALE  
100.000

LIGHTFASTNESS  
6

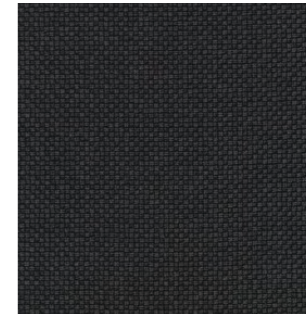
PILLING  
4-5



0127



0147



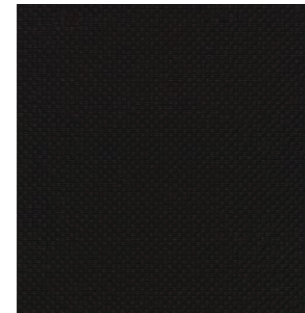
0177



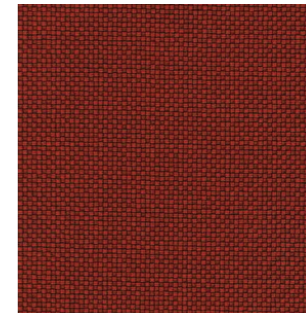
0227



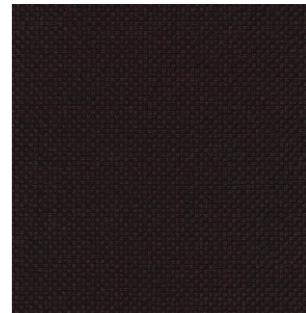
0347



0397



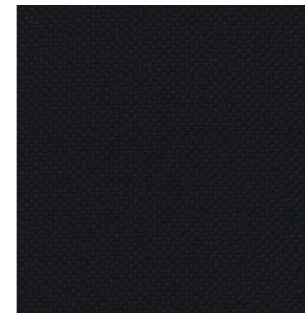
0657



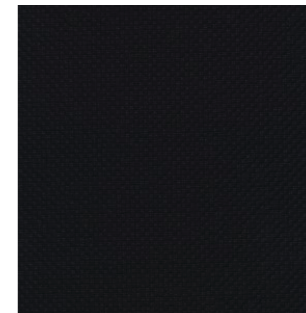
0677



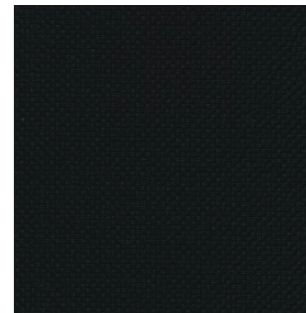
0737



0787



0797



0987



PRICE CATEGORY  
2

MANUFACTURER  
Kvadrat

MATERIALS  
92% New wool  
8% Nylon

MARTINDALE  
60.000

LIGHTFASTNESS  
6

PILLING  
4-5



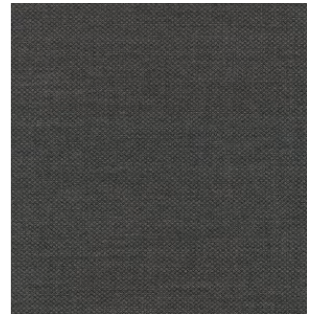
101



121



151



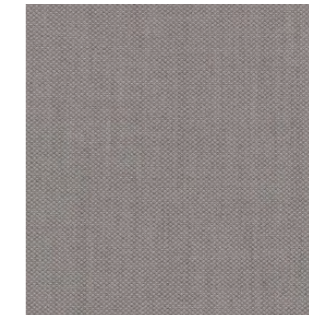
171



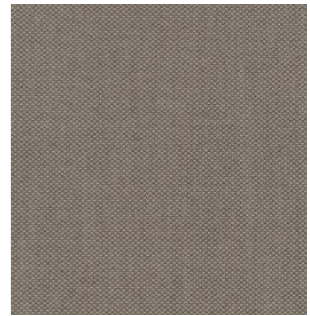
191



201



251



262



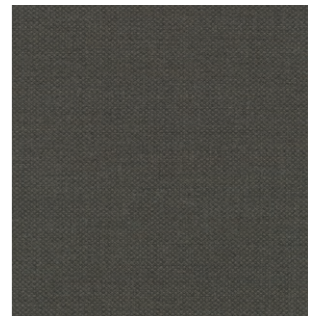
271



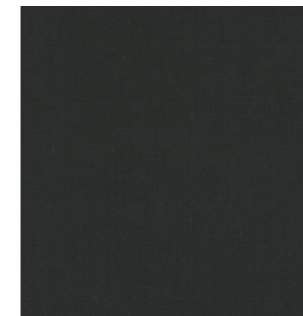
322



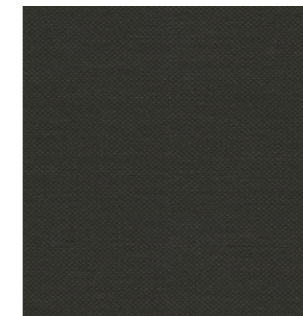
351



371



382



391



422



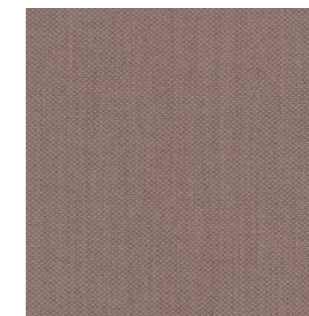
442



451



521



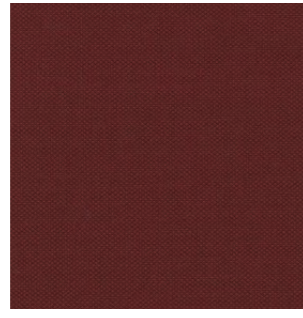
551



562



571



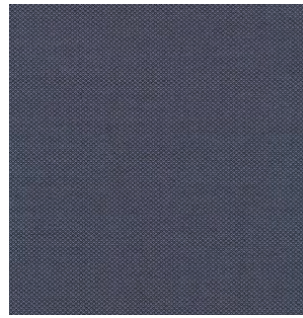
581



591



642



672



721



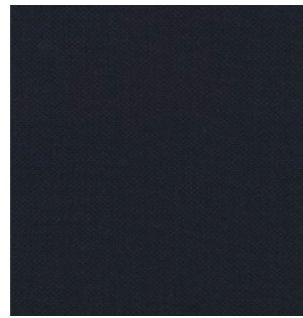
751



762



771



782



791



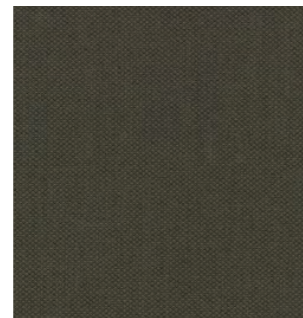
821



862



951



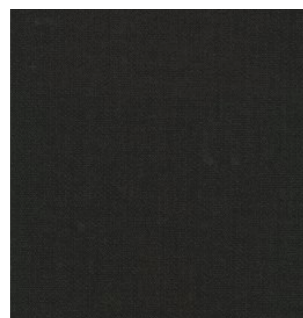
961



971

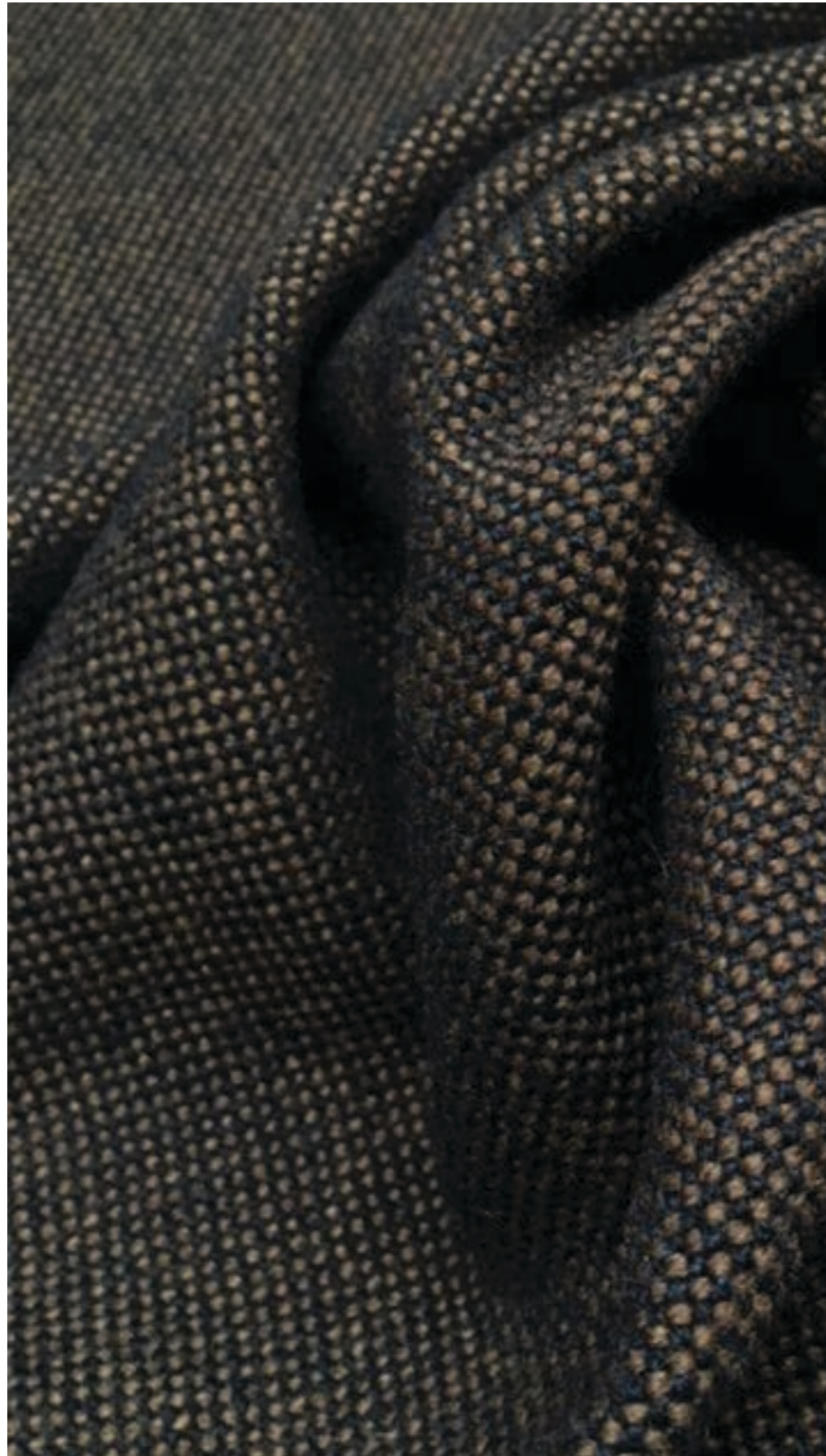


981



991

HALLINGDAL 65  
by Kvadrat



PRICE CATEGORY  
2

MANUFACTURER  
Kvadrat

MATERIALS  
70% New wool  
30% Viscose

MARTINDALE  
100.000

LIGHTFASTNESS  
5-7

PILLING  
3-4



0100



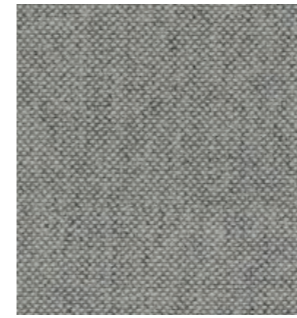
0103



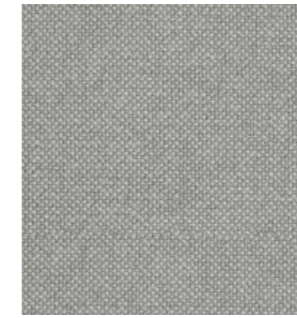
0110



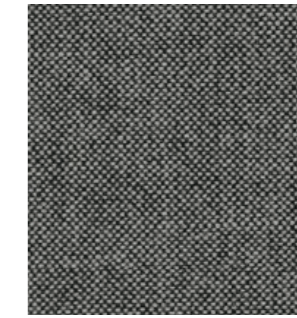
0113



0116



0123



0126



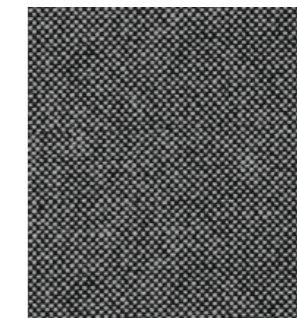
0130



0143



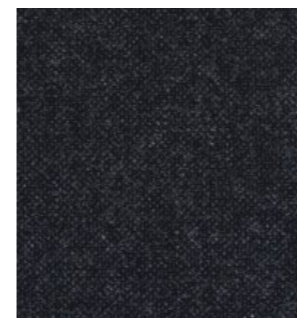
0153



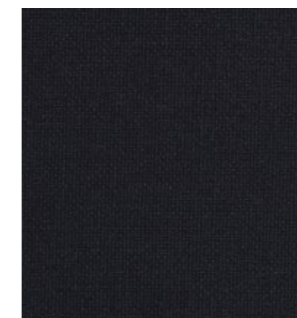
0166



0173



0180



0190



0200



0220



0224



0227



0270



0350



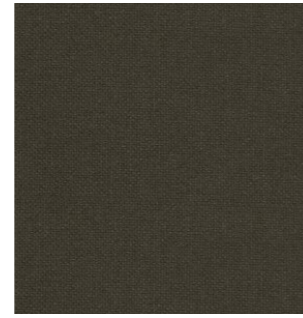
0368



0370



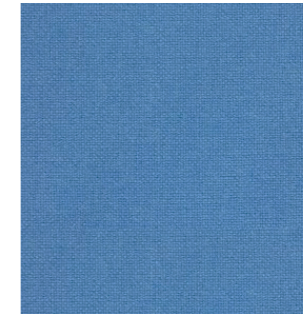
0376



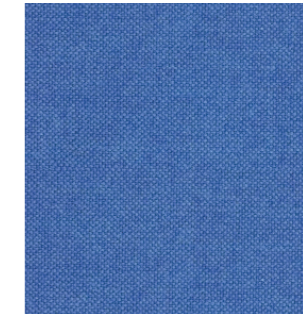
0390



0702



0723



0733



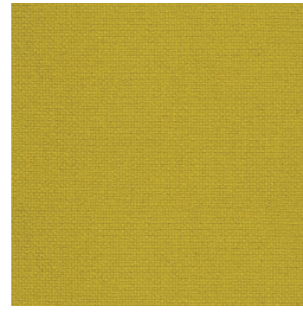
0750



0407



0420



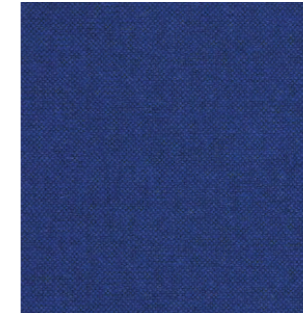
0457



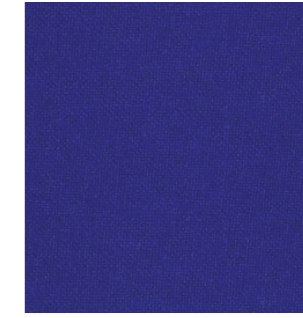
0526



0753



0754



0763



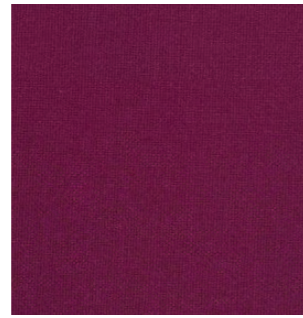
0764



0547



0563



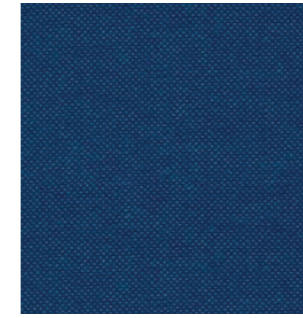
0573



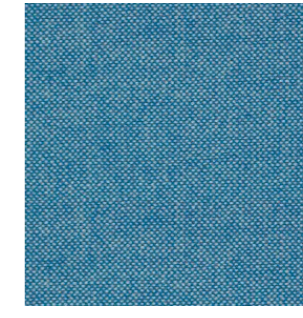
0590



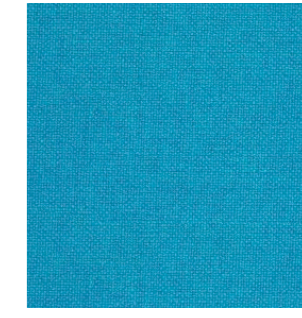
0773



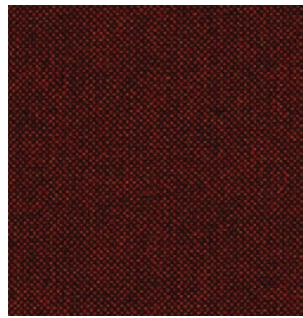
0810



0840



0850



0596



0600



0657



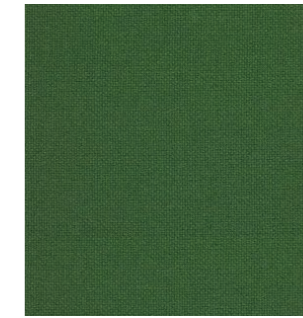
0660



0890



0907



0944



0960



0674



0680



0687



0694

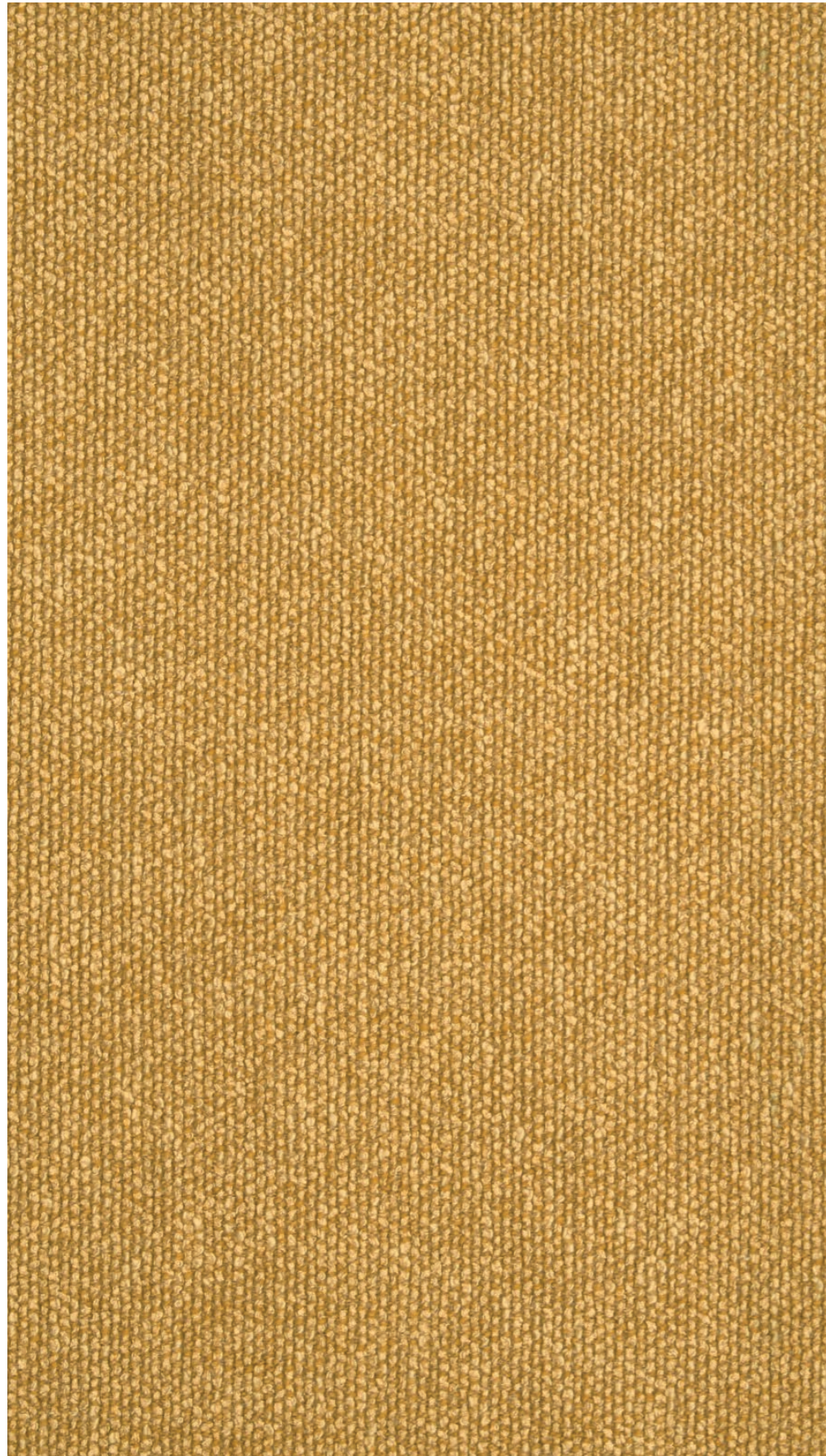


0968



0980





PRICE CATEGORY  
2

MANUFACTURER  
Sahco

MATERIALS  
52% Cotton  
22% Viscose,  
14% Acrylic  
6% Linen  
3% Polyester  
3% Nylon

MARTINDALE  
45.000

LIGHTFASTNESS  
6-7

PILLING  
4-5



0001



0002



0003



0004



0005



0006



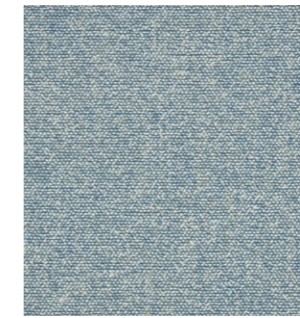
0007



0008



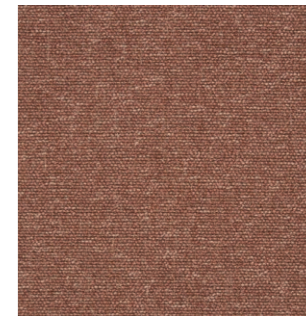
0009



0010



0011



0012



0013



0014



0015



0016



0017



0018



0019



0020



0021



0022



PRICE CATEGORY  
2

MANUFACTURER  
Kvadrat

MATERIALS  
100% post-consumer  
recycled polyester

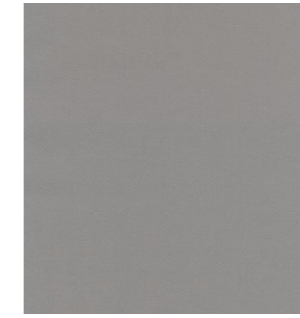
MARTINDALE  
100.000

LIGHTFASTNESS  
6 (ISO 1-8)

PILLING  
4 (ISO 1-5)



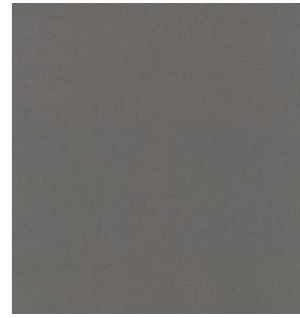
0104



0114



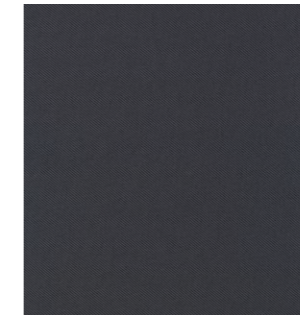
0124



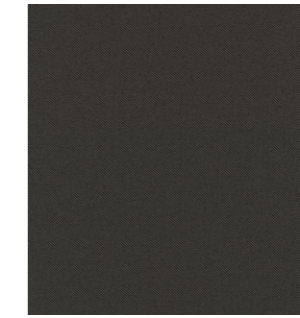
0154



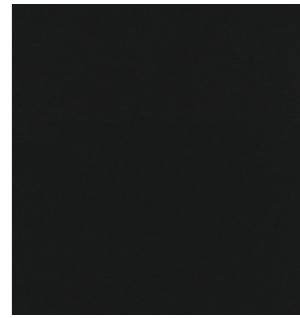
0164



0174



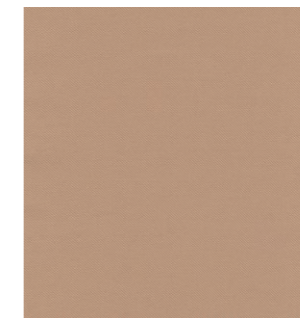
0184



0194



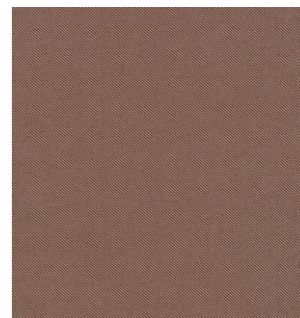
0204



0224



0274



0344



0374



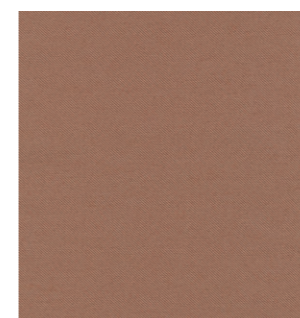
0384



0404



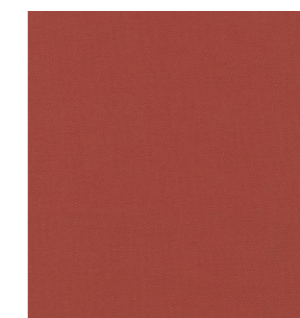
0434



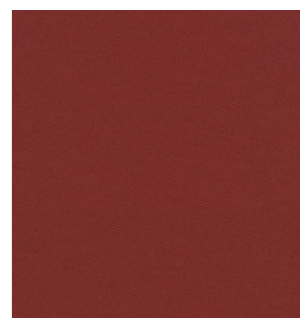
0444



0464



0564



0574



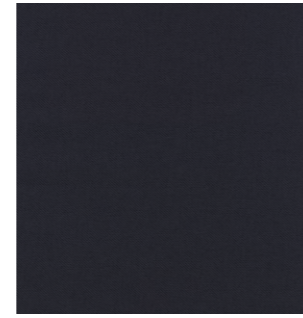
0614



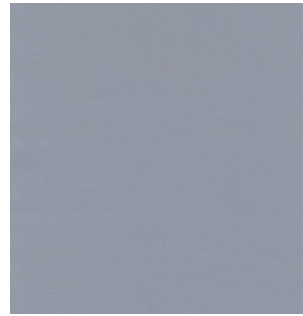
0644



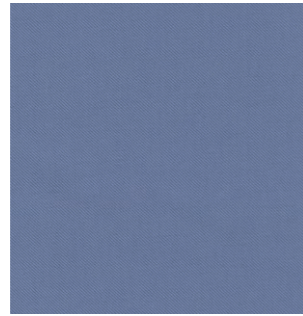
0674



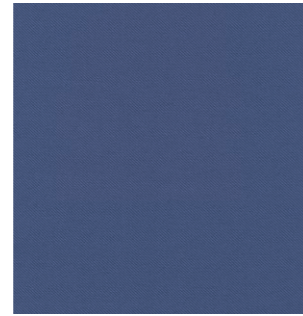
0694



0714



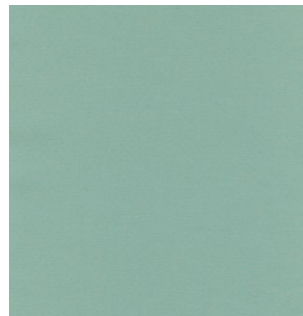
0744



0774



0794



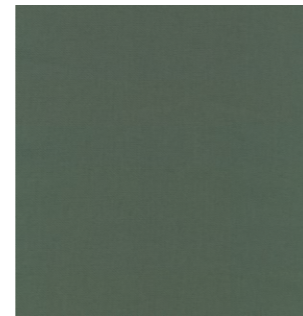
0824



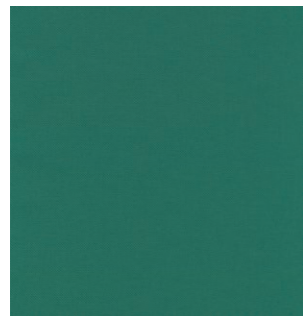
0884



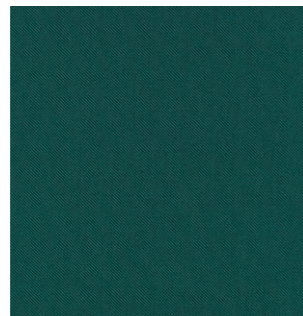
0924



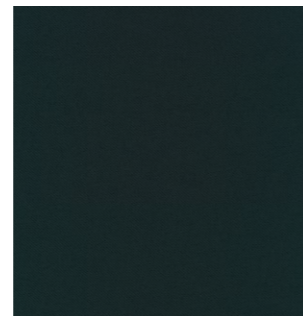
0944



0964



0984



0994




---

PRICE CATEGORY  
2

---

MANUFACTURER  
Kvadrat

---

MATERIALS  
34% Polyester  
31% Wool  
26% Acrylic  
4% Cotton  
3% Nylon  
2% Linen

---

MARTINDALE  
45.000

---

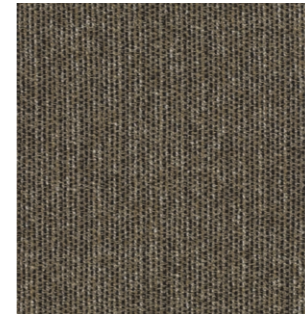
LIGHTFASTNESS  
6-7

---

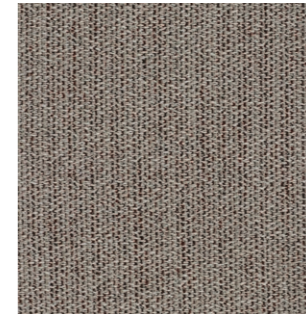
PILLING  
3



242



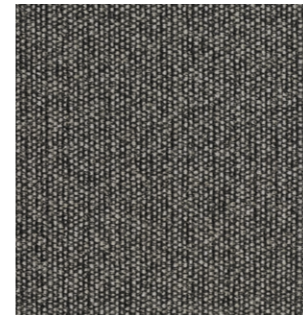
262



622



122



152



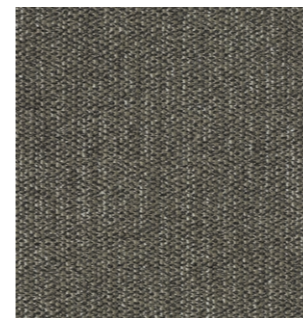
222



292



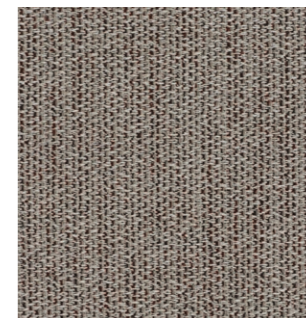
202



952



192

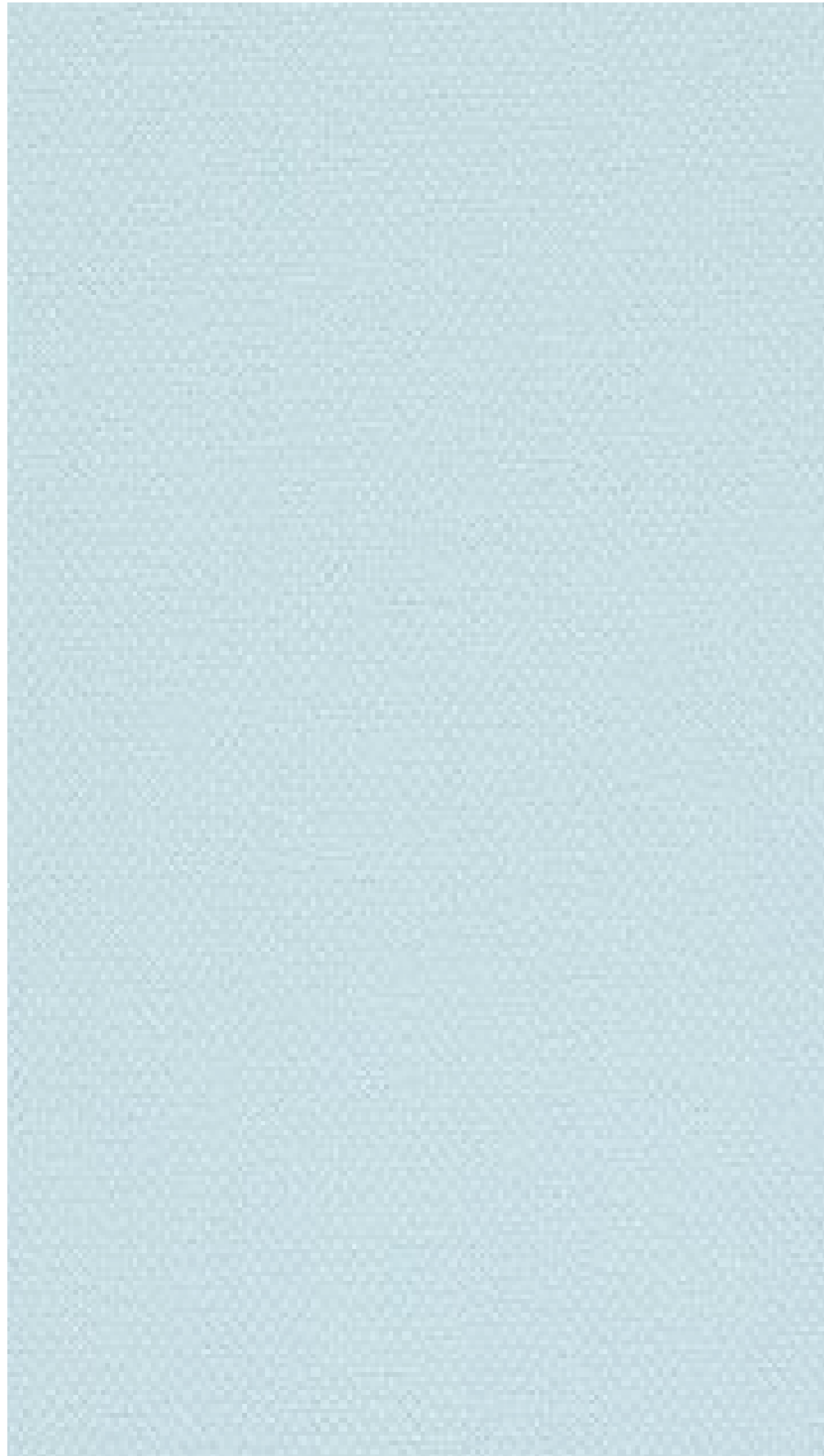


622



442

STEELCUT 2  
by Kvadrat



PRICE CATEGORY  
2

MANUFACTURER  
Kvadrat

MATERIALS  
90% New wool  
10% Nylon

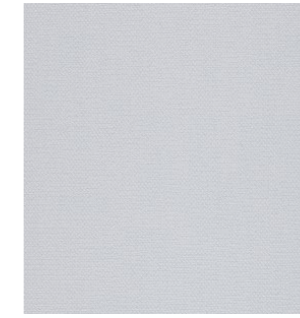
MARTINDALE  
100.000

LIGHTFASTNESS  
5-7

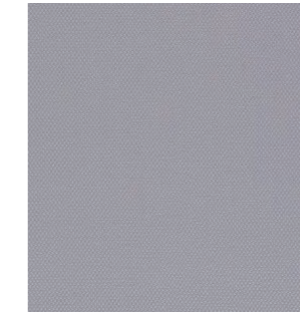
PILLING  
3-4



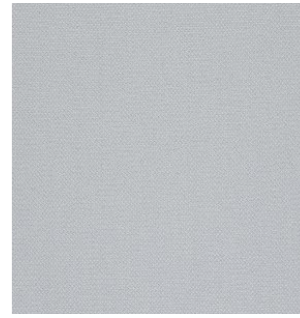
110



120



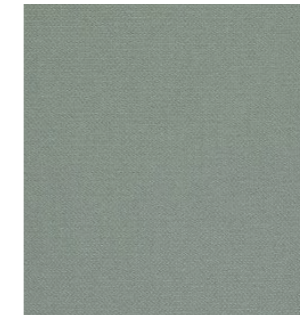
135



140



155



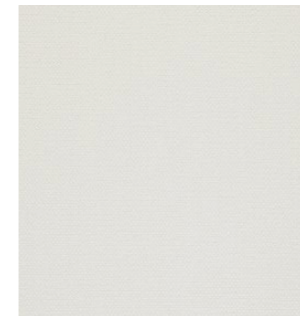
160



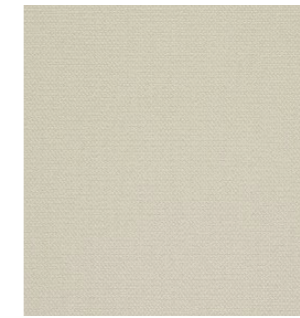
180



190



220



240



255



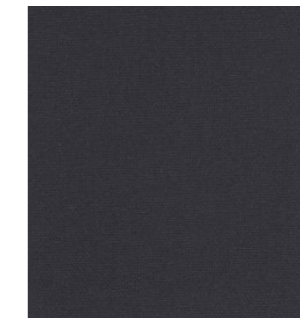
265



365



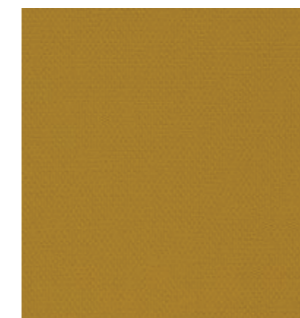
370



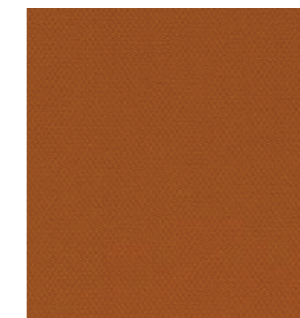
380



435



445



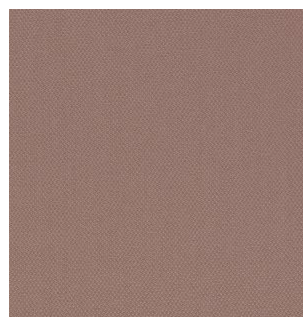
535



545



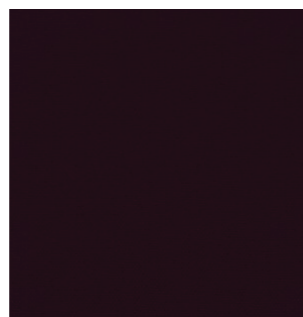
550



605



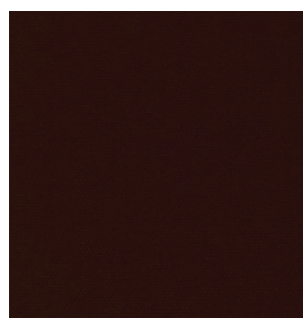
615



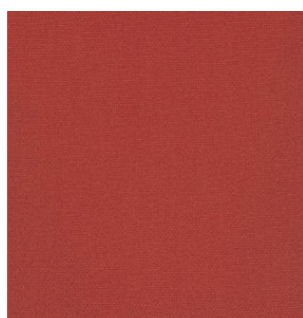
625



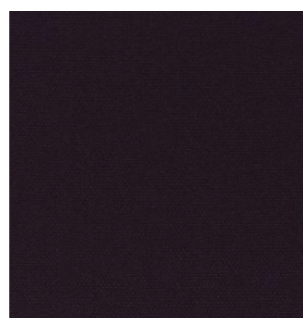
635



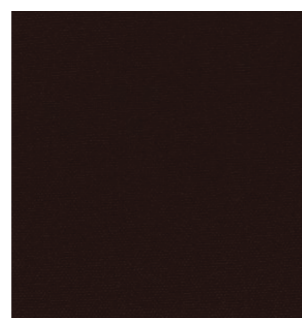
655



660



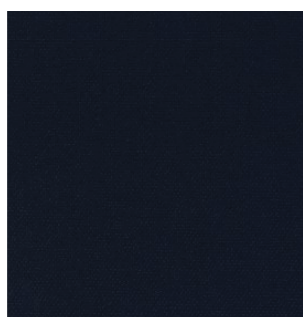
685



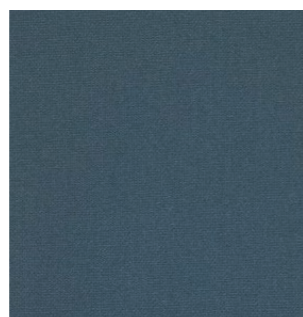
695



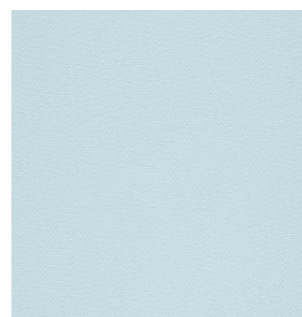
760



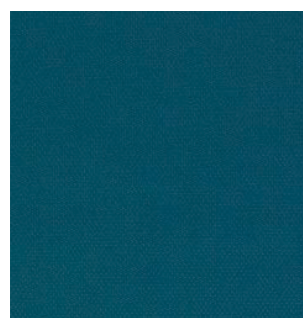
775



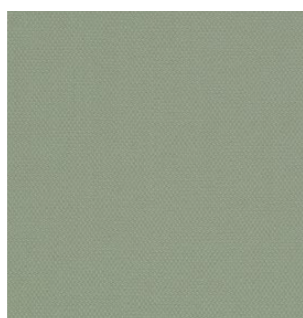
780



820



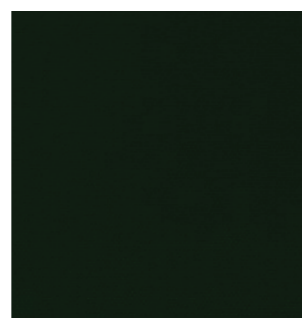
835



935



950



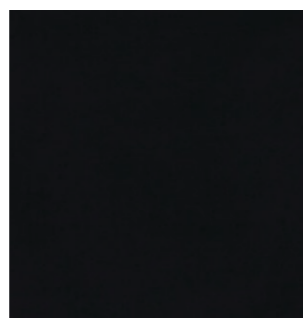
975



985



1122

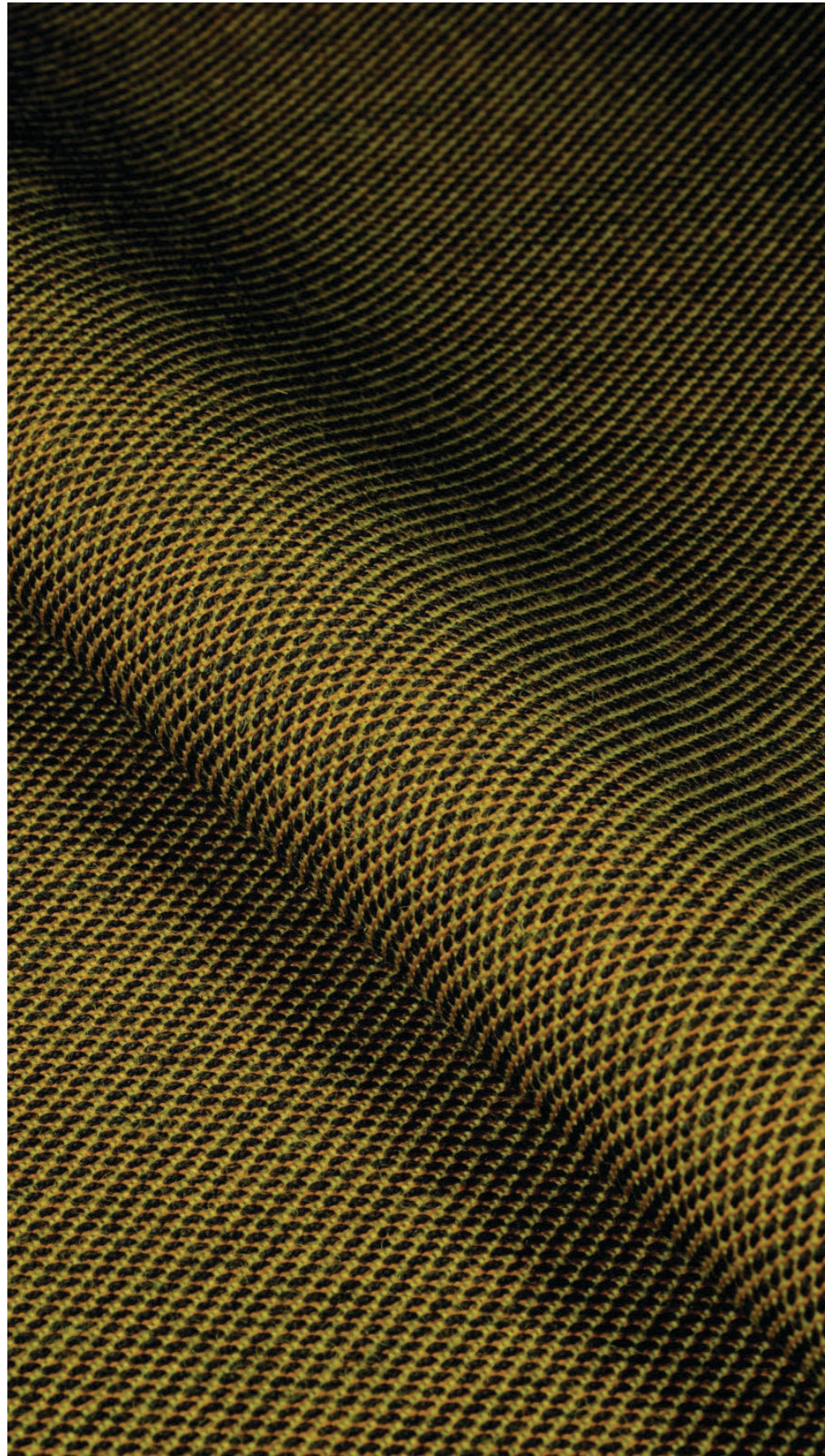


0917



1362

STEELCUT TRIO 3  
by Kvadrat



PRICE CATEGORY  
2

MANUFACTURER  
Kvadrat

MATERIALS  
90% New wool  
10% Nylon

MARTINDALE  
100.000

LIGHTFASTNESS  
5-7

PILLING  
4



105



113



124



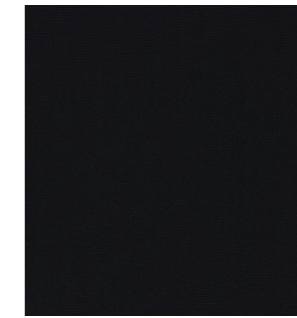
133



153



176



195



205



213



226



236



246



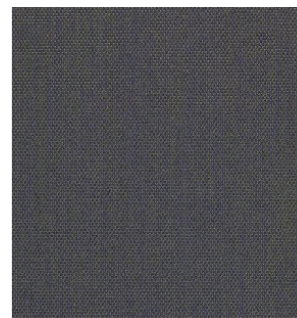
253



266



276



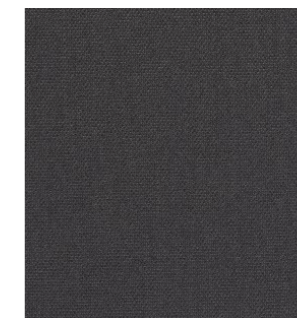
283



336



376



383



416





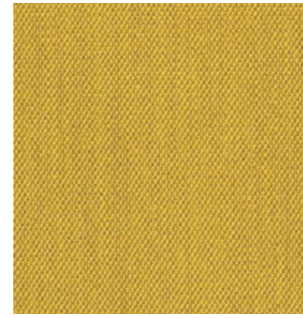
426



436



446



453



756



776



796



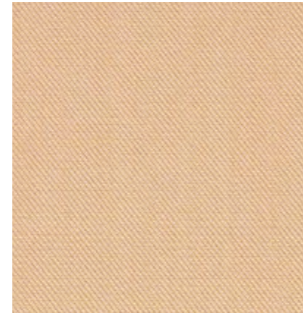
806



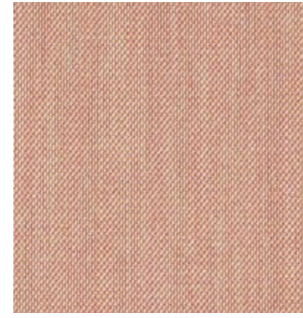
466



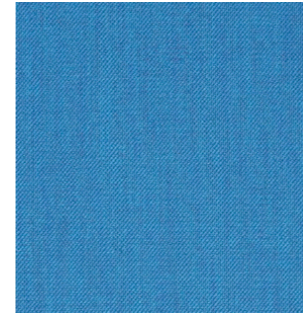
476



506



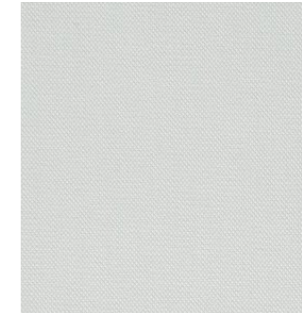
515



865



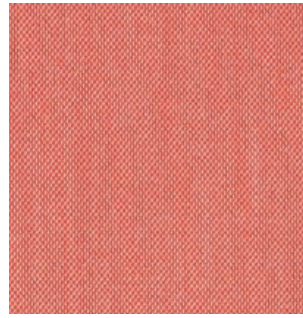
883



906



916



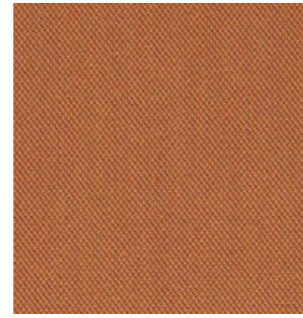
526



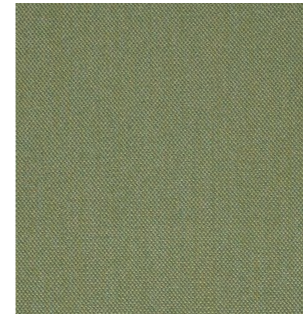
533



553



576



946



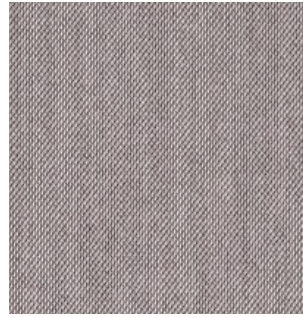
953



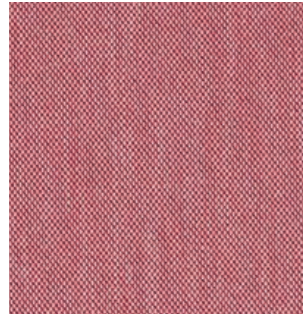
966



976



616



636



645



666



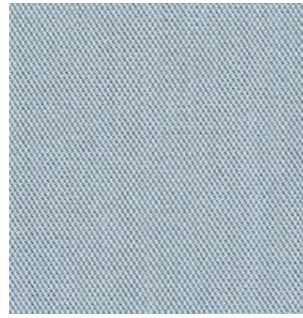
983



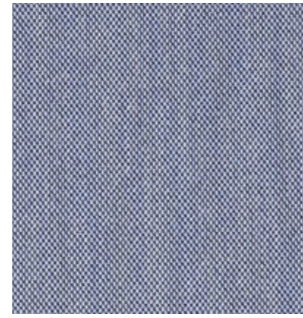
996



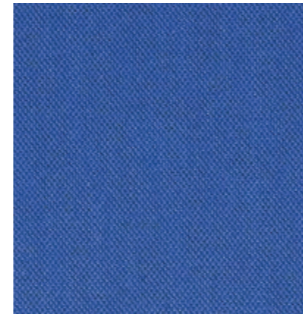
686



713



716



746

## *Textile Category 3*



---

PRICE CATEGORY  
3

---

MANUFACTURER  
JAB

---

MATERIALS  
51% Polyacrylic  
31% Viscose  
18% Polyester

---

MARTINDALE  
30.000



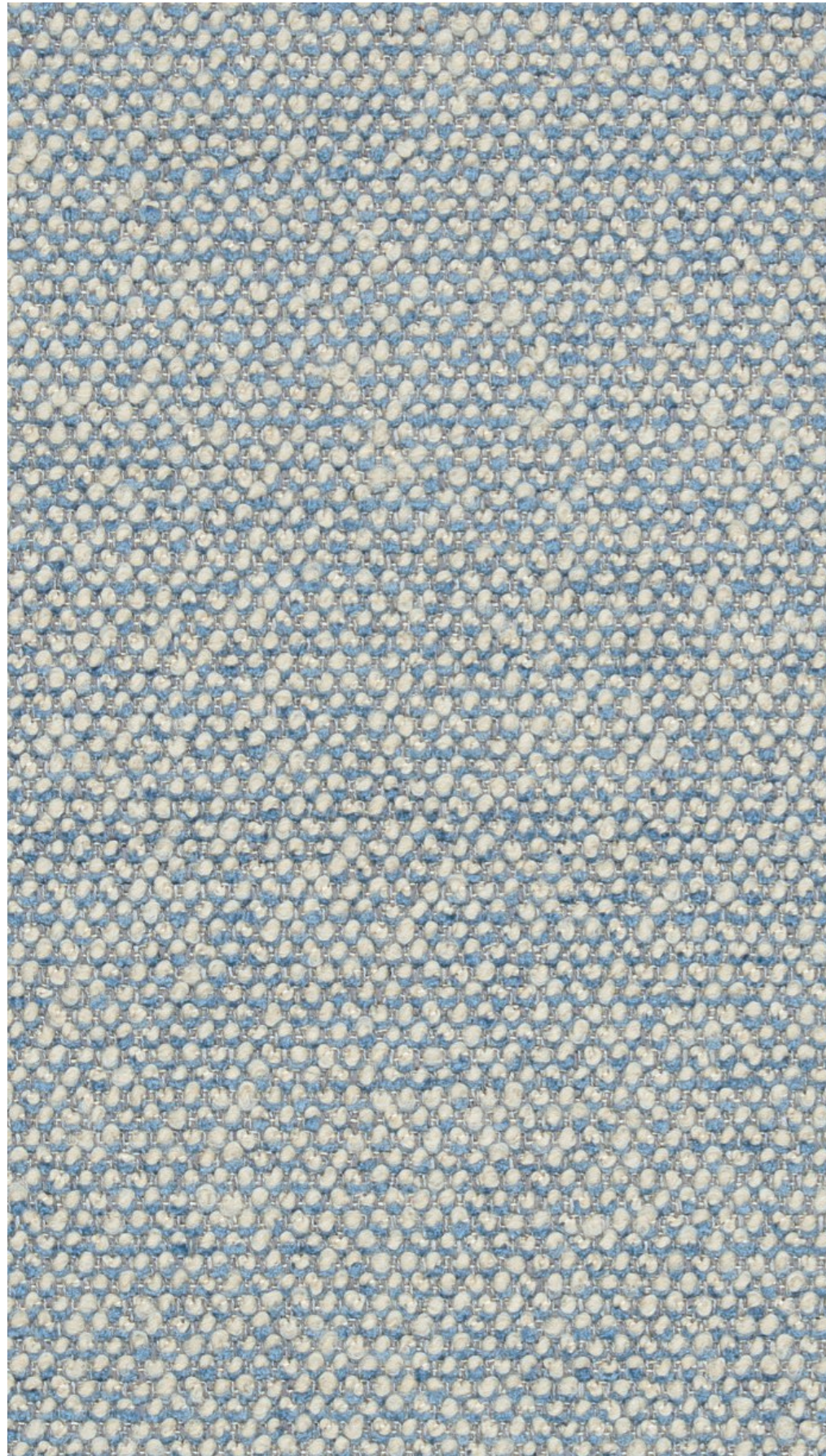
1-1365-040



1-1365-070



1-1365-091




---

PRICE CATEGORY  
3

---

MANUFACTURER  
Sahco

---

MATERIALS  
43% Viscose  
17% Polyacrylic  
15% New wool  
9% Cotton  
8% Linen  
8% Polyester

---

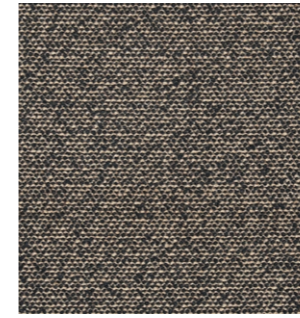
MARTINDALE  
40.000

---

LIGHTFASTNESS  
6

---

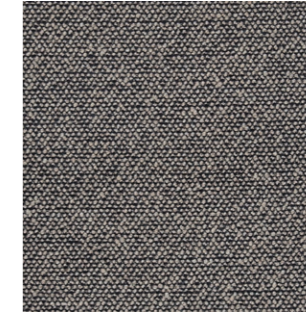
PILLING  
3



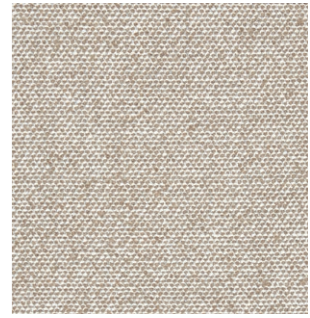
001



002



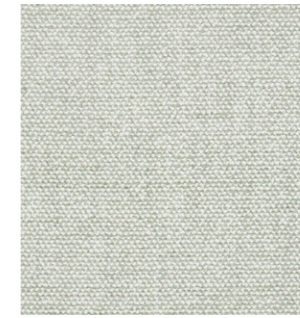
003



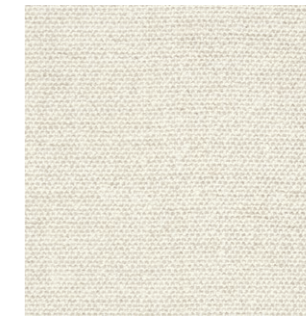
004



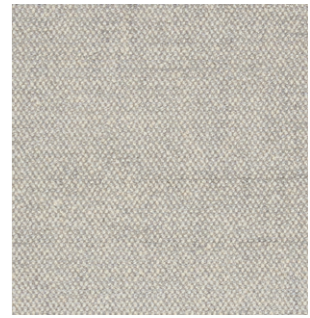
005



006



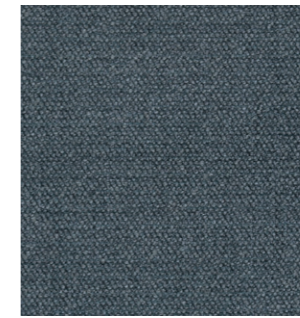
007



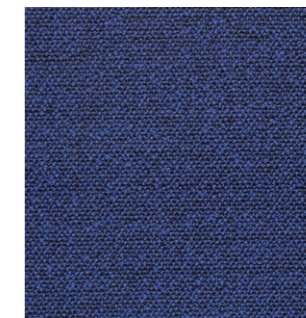
008



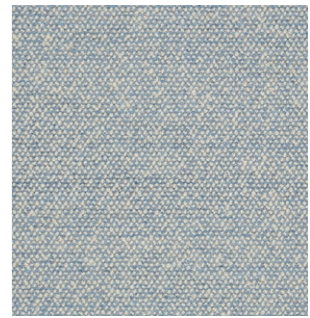
009



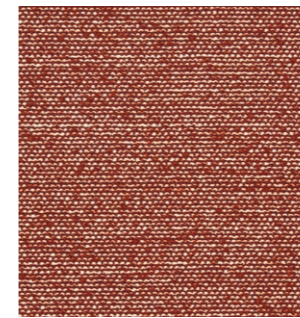
010



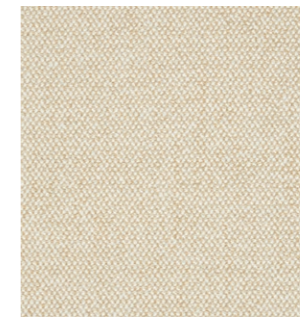
011



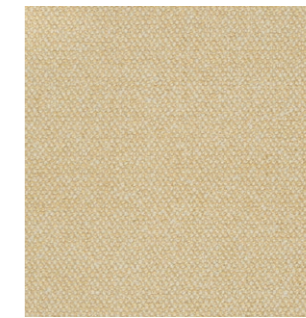
012



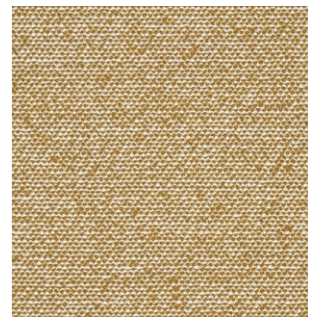
013



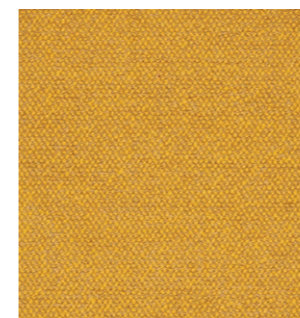
014



015



016



017

VIDAR 4  
by Kvadrat



PRICE CATEGORY  
3

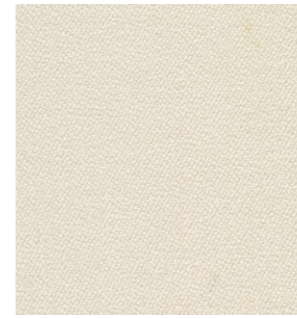
MANUFACTURER  
Kvadrat

MATERIALS  
94% New wool  
6% Nylon

MARTINDALE  
100.000

LIGHTFASTNESS  
7 (ISO 1-8)

PILLING  
4 (ISO 1-5)



0106



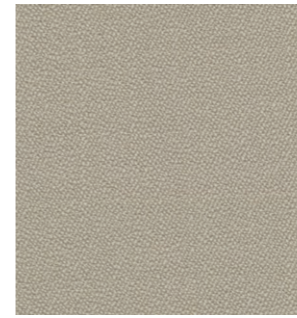
0123



0133



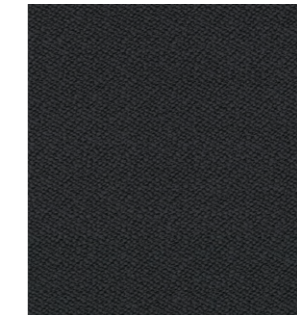
0143



0146



0152



0182



0222



0323



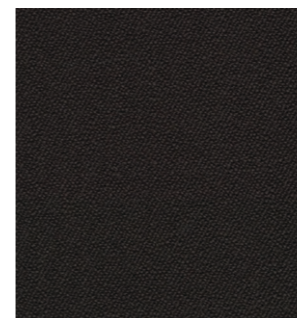
0333



0353



0363



0386



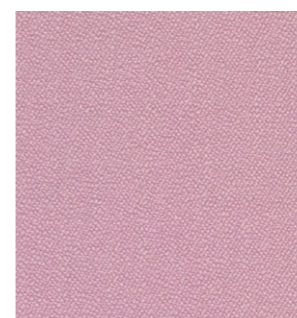
0443



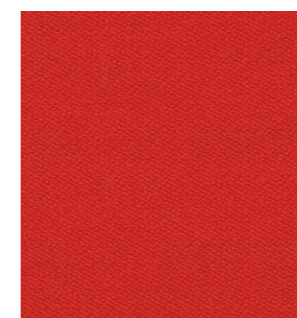
0456



0472



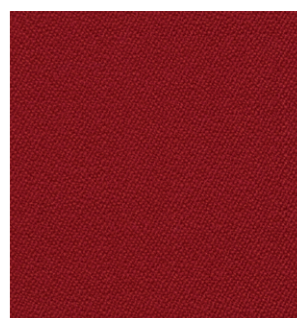
0526



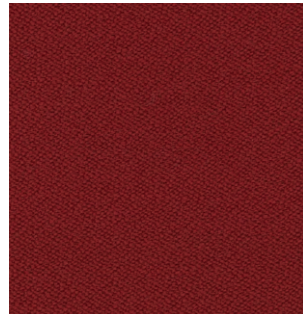
0542



0554



0556



0582



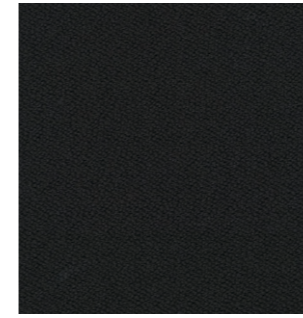
0622



0633



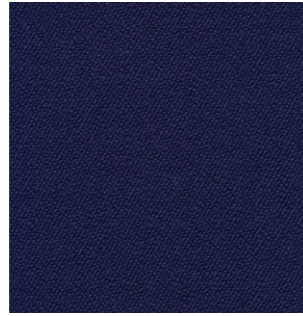
0653



1880



0656



0676



0693



0723



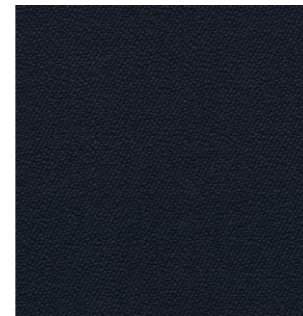
0733



0743



0772



0786



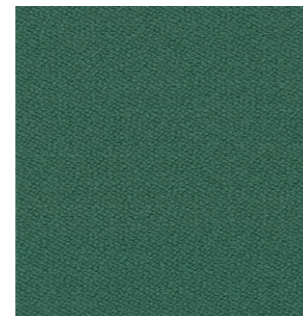
0872



0913



0932



0943



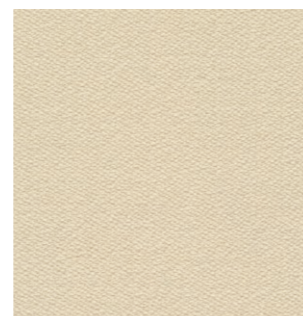
0956



0972



1062



1511



PRICE CATEGORY  
3

MANUFACTURER  
Kvadrat

MATERIALS  
65% cotton  
20% polyacrylic  
15% polyester

MARTINDALE  
70.000

LIGHTFASTNESS  
5-6 (ISO 1-8)

PILLING  
5 (ISO 1-5)



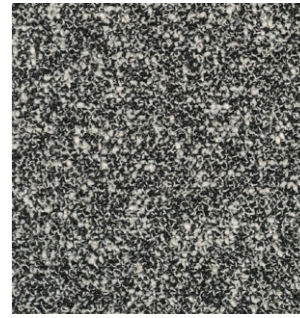
0001



0002



0003



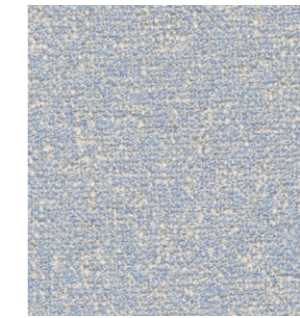
0004



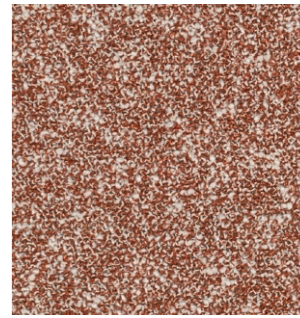
0005



0006



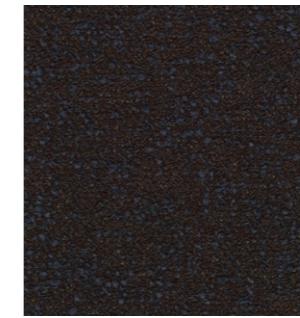
0007



0008



0009



0010



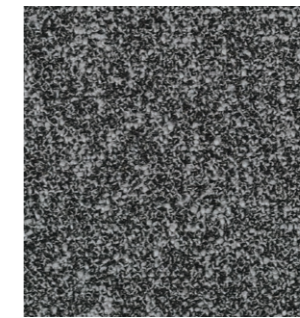
0011



0012



0013



0014



0015



0016

## *Textile Category 4*



CABANON SOFT  
*by Designers Guild*



---

PRICE CATEGORY  
4

---

MANUFACTURER  
Designers Guild

---

MATERIALS  
83% Cotton  
17% Polyimide

---

MARTINDALE  
50.000

---

LIGHTFASTNESS  
4

---

PILLING  
4-5



FCL7029/04 (ROSEAU)

DOPPIOPANAMA  
*by Dedar*



---

PRICE CATEGORY  
4

---

MANUFACTURER  
Dedar

---

MATERIALS  
60% Cotton  
35% Polyester  
5% Polyamide

---

MARTINDALE  
35.000



T14012\_001



T14012\_004

GRAND MOHAIR  
*by Danish Art Weaving*



---

PRICE CATEGORY  
4

---

MANUFACTURER  
Danish Art Weaving

---

MATERIALS  
100% Mohair

---

MARTINDALE  
Being tested  
(>200.000 Wyzenbeek)

---

LIGHTFASTNESS  
4,5 (ISO 1-8)

---

PILLING  
Being tested

---

CERTIFICATES  
Oeko-Tex



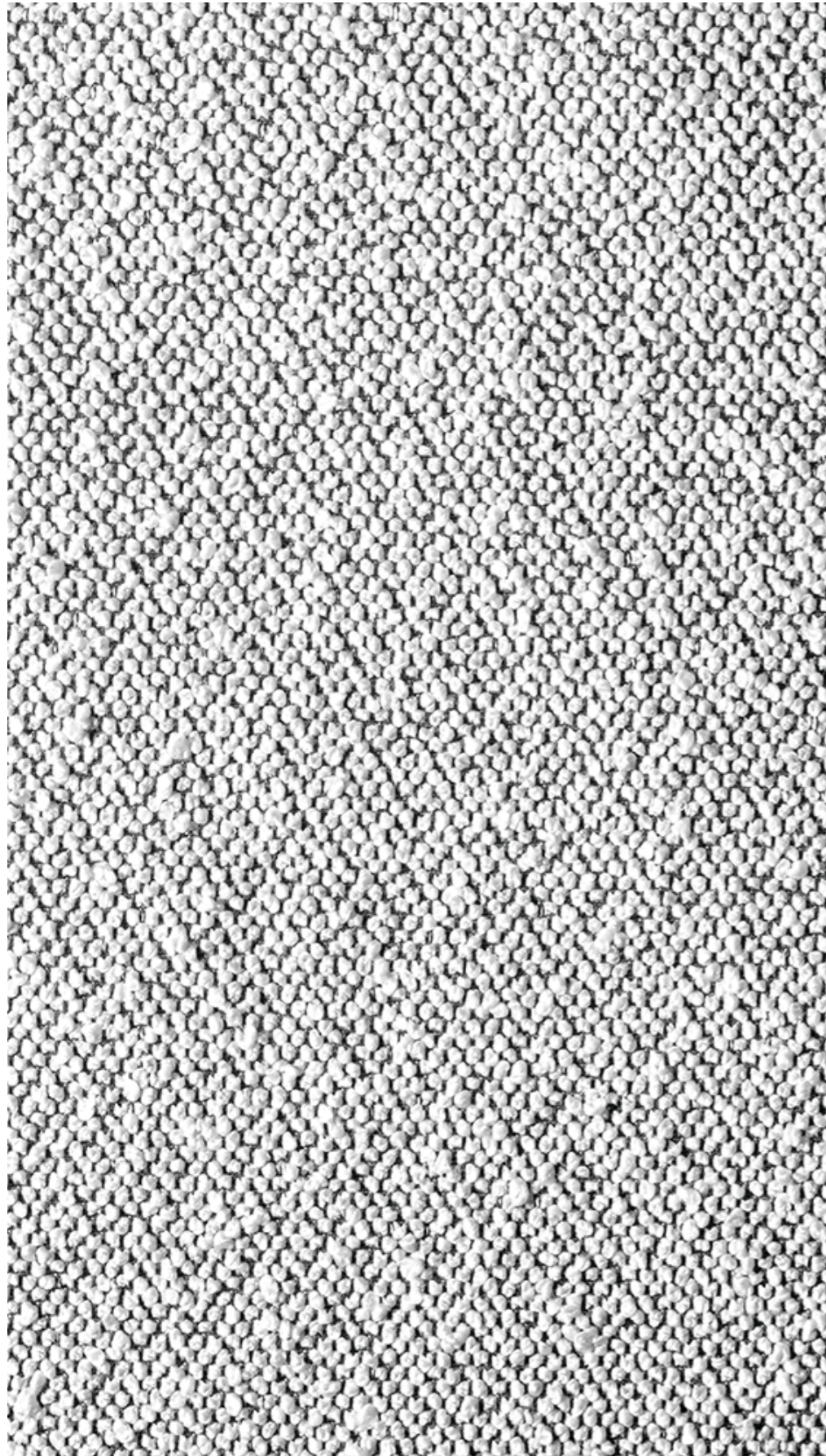
1103



2600



8205



PRICE CATEGORY  
4

MANUFACTURER  
Dedar

MATERIALS  
72% Wool  
27% Cotton  
1% Polyamide

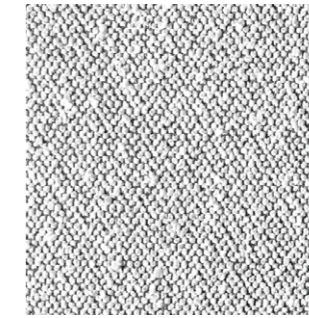
MARTINDALE  
40.000



T19028\_001



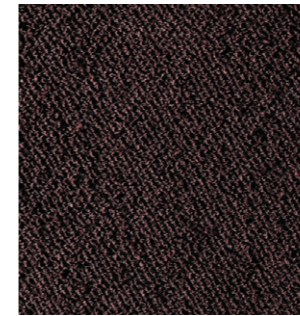
T19028\_002



T19028\_003



T19028\_004



T19028\_005



T19028\_006



T19028\_007



T19028\_008



T19028\_009

The Audo upholstery programme shows an overview of our textile and leather standard programme. All textile and leather collections are available in all colours.

Please note that the colour references are only intended as a guide. For further information please see manufacturer websites, or contact your local Audo sales representative.

Selection of textiles or leather outside of our upholstery programme, is subject to final testing and approval. Additional deliverytime may also occur.

SORENSENLEATHER.COM  
NEVOTEX.COM



- TESTED AND APPROVED.
- NOT TESTED YET, BUT POSSIBLE TO TEST

Use table to determine the upholstery options available for fabric-covered items.

| PRICE CATEGORY 1               | AFTERROOM | BRASILIA | CO CHAIR | CONSTANCE CHAIR | HARBOUR CHAIR | HARBOUR LOUNGE CHAIR | INGEBORG | KNITTING CHAIR | MERKUR | MINGLE | MY OWN CHAIR | READY | THE TIRED MAN | VILHELM | THE PENGUIN | ELIZABETH | THE SEAL |
|--------------------------------|-----------|----------|----------|-----------------|---------------|----------------------|----------|----------------|--------|--------|--------------|-------|---------------|---------|-------------|-----------|----------|
| DAKAR, NEVOTEX                 | ●         | ●        | ●        |                 | ●             | ●                    | ○        | ○              | ●      |        | ○            | ●     | ○             | ○       | ●           | ●         | ●        |
| ENVY, SØRENSEN LEATHER         | ○         | ○        | ○        |                 |               |                      | ○        | ○              | ○      |        | ○            | ○     | ○             | ○       | ○           | ○         | ○        |
| ULTRA, SØRENSEN LEATHER        | ●         | ●        | ●        |                 | ●             | ○                    | ○        | ○              | ●      |        | ○            | ●     | ○             | ○       | ○           | ○         | ○        |
| PRICE CATEGORY 2               |           |          |          |                 |               |                      |          |                |        |        |              |       |               |         |             |           |          |
| DUNES, SØRENSEN LEATHER        | ●         | ●        | ●        |                 | ●             | ○                    | ○        | ○              | ●      |        | ○            | ●     | ○             | ○       | ●           | ●         | ●        |
| NUANCE, SØRENSEN LEATHER       | ●         | ○        | ●        |                 | ●             | ●                    | ○        | ○              | ○      |        | ○            | ○     | ○             | ○       | ○           | ○         | ○        |
| PRICE CATEGORY 3               |           |          |          |                 |               |                      |          |                |        |        |              |       |               |         |             |           |          |
| ROYAL NUBUCK, SØRENSEN LEATHER | ●         | ○        | ●        |                 | ●             | ●                    | ○        | ○              | ○      |        | ○            | ○     | ○             | ○       | ○           | ○         | ○        |
| SHEEPSKIN CURLY, SKANDILOCK    |           |          |          | ●               |               |                      | ●        |                |        | ●      | ●            |       | ●             | ●       |             |           |          |
| SHEEPSKIN CURLY, NEVOTEX       |           | ●        |          |                 |               |                      |          | ○              |        |        |              |       |               |         |             |           |          |
| PRICE CATEGORY 4               |           |          |          |                 |               |                      |          |                |        |        |              |       |               |         |             |           |          |
| ELEGANCE, SØRENSEN LEATHER     | ●         | ○        | ●        |                 | ●             | ○                    |          | ○              |        |        | ○            |       | ○             |         | ●           | ●         | ●        |

*Leather Category 1*



PRICE CATEGORY  
1

MANUFACTURER  
Nevotex

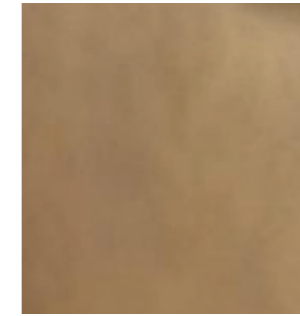
MATERIALS  
Aniline leather

THICKNESS  
0.9 – 1.1 mm

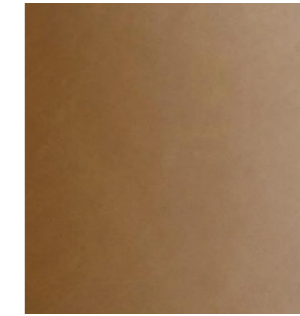
CERTIFICATE  
OEKO-TEX®



0197 TAN



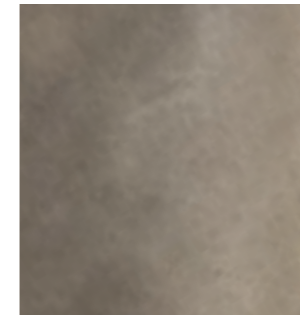
0229 CHESTNUT



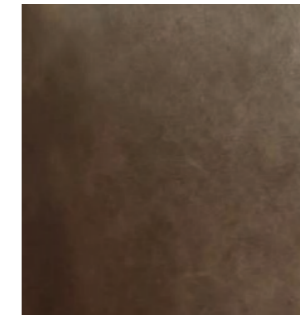
0250 COGNAC



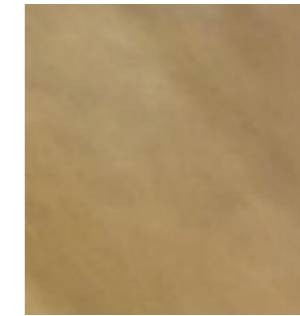
0258 SOIL



0311 ANTILOP



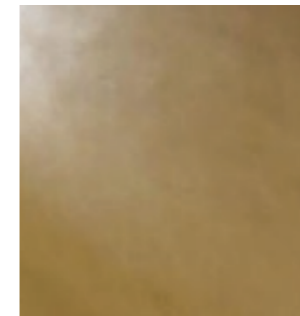
0329 BROWN



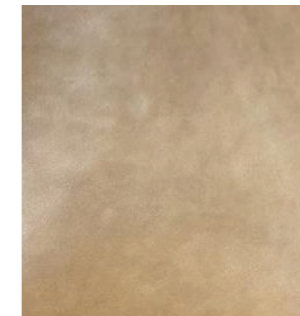
0549 DUNE



0550 YELLOW



0551 WHISKY



0565 ORANGE



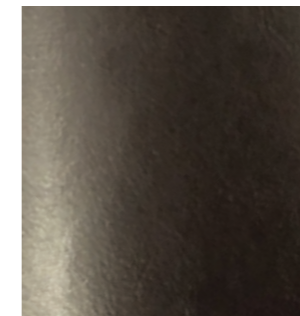
0681 DARK GREEN



0691 TERRAGON



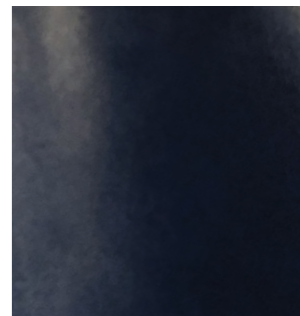
0692 LIGHT GREEN



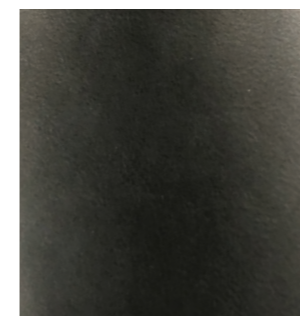
0738 AUBERGINE



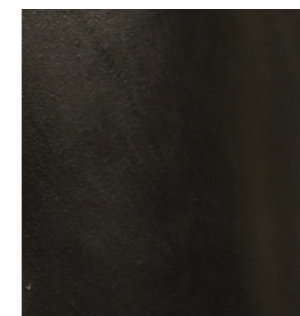
0778 TURKIS



0779 DEEP BLUE



0780 DARK GREY



0842 BLACK

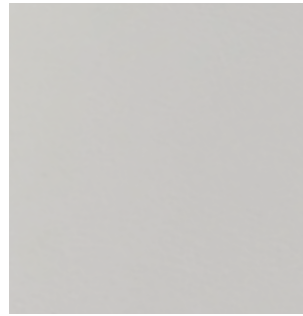


0854 GREY

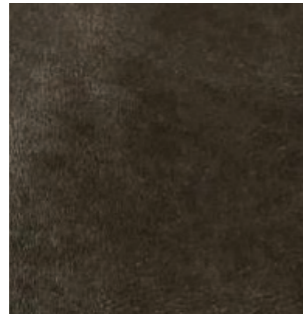


0855 GRAYSHADOW





01015 WHITE



03009 CIOOCO



04009 PARROT



04010 POT-PORRY



04060 PURPLE



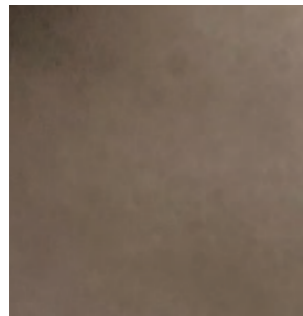
04109 RED



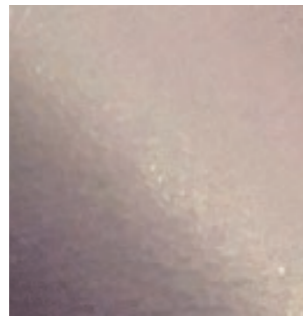
04147 DARK RED



06013 GREEN



06048 PEATMOOS



07008 DARK PURPLE



08079 LIGHT GREY



---

PRICE CATEGORY  
1

---

MANUFACTURER  
Sørensen Leather

---

MATERIALS  
Aniline leather

---

THICKNESS  
1,0-1,2 mm



COGNAC - 20320



BLACK - 20321



NOUGAT - 20322



ANTHRAZITE - 20323



OLIVE - 20324

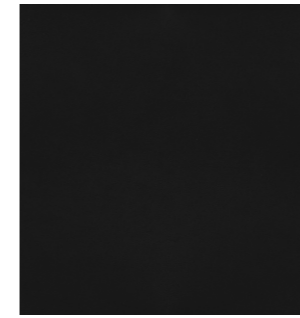


PRICE CATEGORY  
1

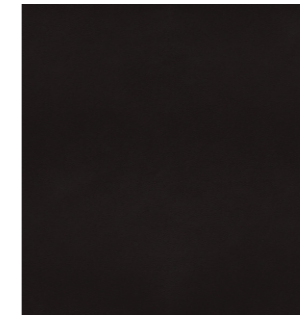
MANUFACTURER  
Sørensen Leather

MATERIALS  
Protected leather

THICKNESS  
0.9 – 1.1 mm



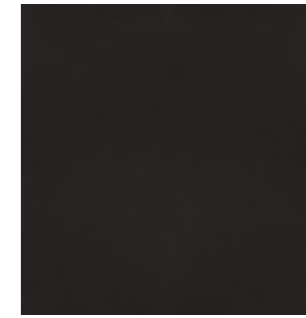
BLACK - 41599



BLACK BROWN - 41590



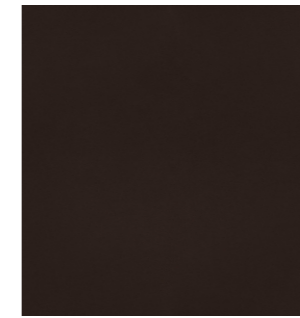
NAVY - 41573



ANTHRAZITE - 41580



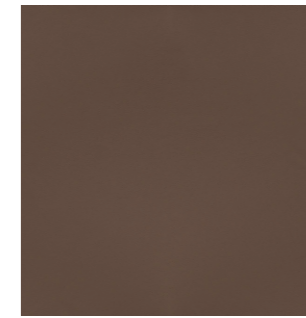
LAVA - 41575



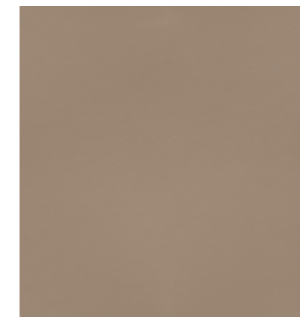
CHOCOLATE - 41589



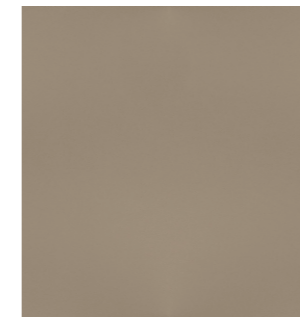
GREY - 41585



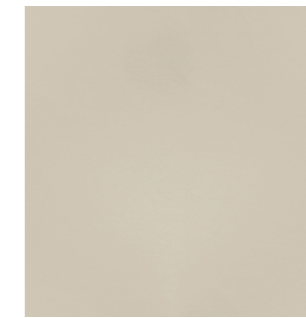
SAFARI - 41586



EARTH - 41584



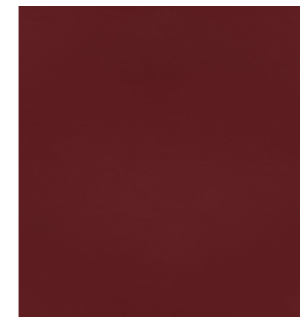
ALTWEISS - 41576



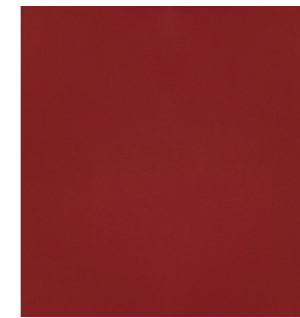
EGGSHELL - 41581



WHITE - 41594



BRICK - 41579



POPPY - 41578



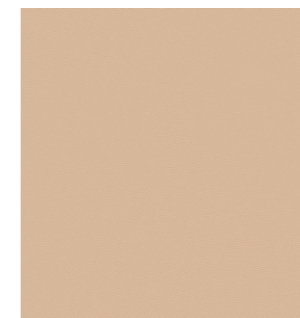
COGNAC - 41598



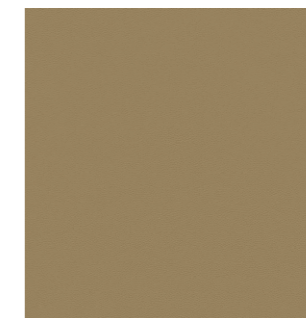
BRANDY - 41574



CAMEL - 41571



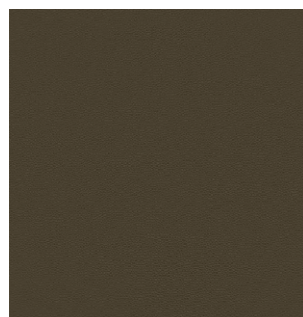
HONEY - 41572



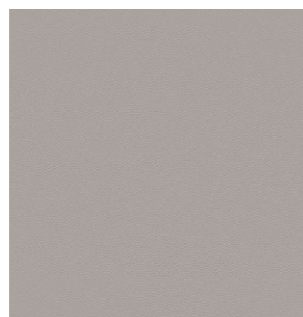
LEAF - 41566



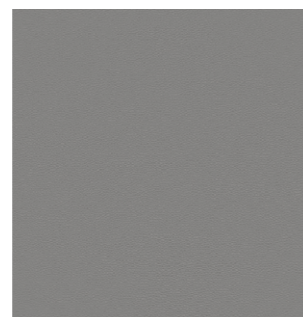
MARSH - 41570



MOSS - 41569



OAT - 41568



SMOKE - 41567

## *Leather Category 2*

DUNES  
*by Sørensen Leather*



---

PRICE CATEGORY  
2

---

MANUFACTURER  
Sørensen Leather

---

MATERIALS  
Aniline leather

---

THICKNESS  
1.1 – 1.3 mm

---

CERTIFICATE  
Nordic Swan Ecolabel



DARK BROWN - 21001



RUST - 21002



CAMEL - 21004



ANTHRAZITE - 21003



COGNAC - 21000



RACING GREEN - 21005



GREY - 21007

NUANCE  
*by Sørensen Leather*



PRICE CATEGORY  
2

MANUFACTURER  
Sørensen Leather

MATERIALS  
Protected leather

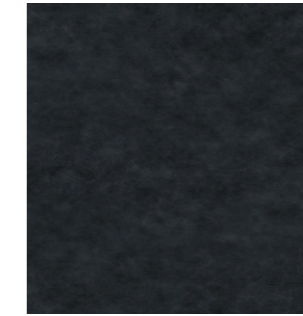
THICKNESS  
1.1 – 1.3 mm



SHADOW GREY - 40780



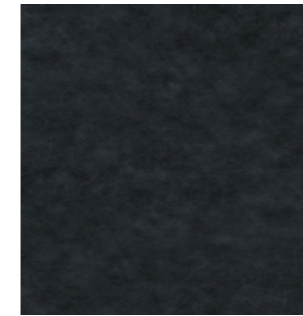
EARTHY GREY - 40781



HEAVENLY GREY - 40781



SMOKED GREY - 40784



BURNED GREY - 40783



LIGHT GREY - 40782



DARK GREEN - 40787



DARK BROWN - 40791



CINNAMON - 40788



BURGUNDY - 40789



WALNUT - 40790



RUST - 40786

## *Leather Category 3*



ROYAL NUBUCK  
*by Sørensen Leather*



PRICE CATEGORY  
3

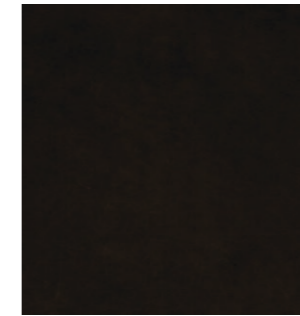
MANUFACTURER  
Sørensen Leather

MATERIALS  
Aniline leather

THICKNESS  
1.2 – 1.6 mm



MINERAL - 30251



HAVANNA - 30258



STONE - 30255



OFF-WHITE - 30252



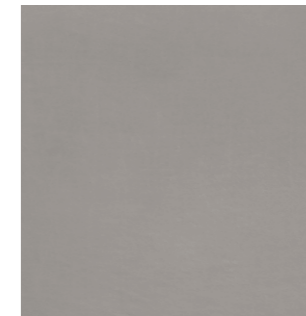
LAVA - 30254



CINNAMON - 30257



ALMOND - 30256



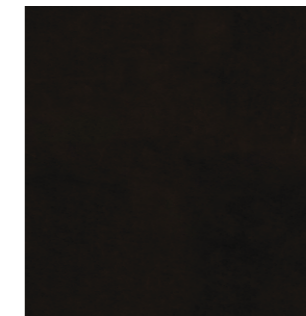
LIGHT GREY - 30250



ECRU - 30253



COGNAC - 30260



BLACK - 30259

SHEEPSKIN  
*by Skandilock*



---

PRICE CATEGORY  
3

---

MANUFACTURER  
Skandilock

---

MATERIALS  
Sheepskin

---

THICKNESS  
17 mm



OFF WHITE



SAHARA



MOONLIGHT



HONEY



ESPRESSO



GREEN TEA



PRICE CATEGORY  
3

MANUFACTURER  
Nevotex

MATERIALS  
Sheepskin

THICKNESS  
17 – 21mm



NATURE



SAHARA



ROOT

## *Leather Category 4*



---

PRICE CATEGORY  
4

---

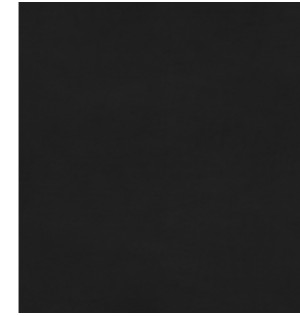
MANUFACTURER  
Sørensen Leather

---

MATERIALS  
Aniline leather

---

THICKNESS  
1.2 – 1.4 mm



BLACK - 20198



INDIAN RED - 20193



WALNUT - 20195



MOCCA - 20197

Individual and unique markings may appear on the leather and should not be considered as defects.



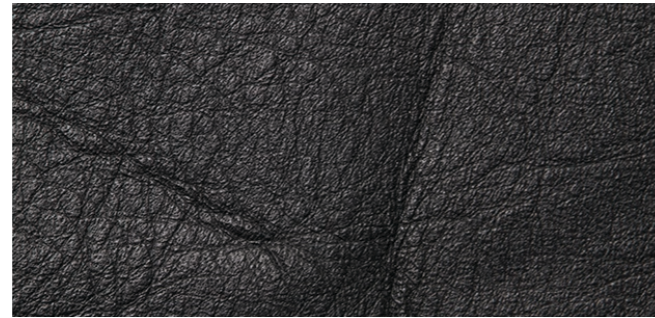
FAT WRINKLES



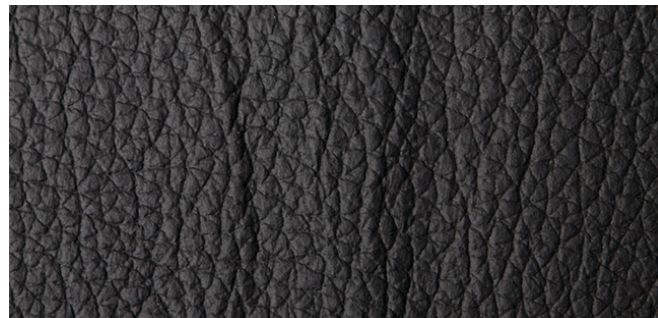
SCAR / INSECT BITES



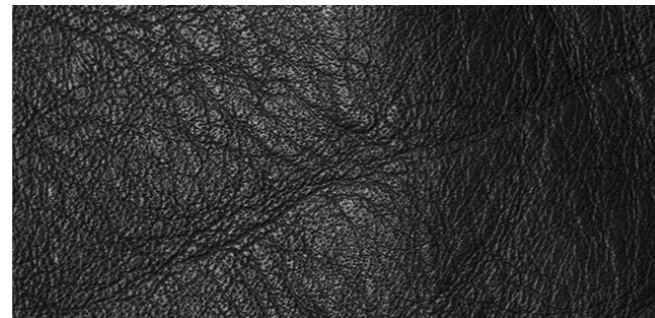
FOLDS



BUTCHING SCAR



HEALED SCARS



FAT WRINKLES

